

Kossuth County, Iowa
Iowa North Zone (1401)
Horiz. Datum: NAD83(1996)
Vert. Datum: NAVD 1988
US Survey Feet
2005

Point Name: **608**

Designation: 2005-608 Kossuth Co GPS Control Point

Northing: **3794929.67**sft Easting: **4715951.51**sft

Orthometric Height: **1136.15**sft Ellipsoid Height: **1040.54**sft **Geoid03**

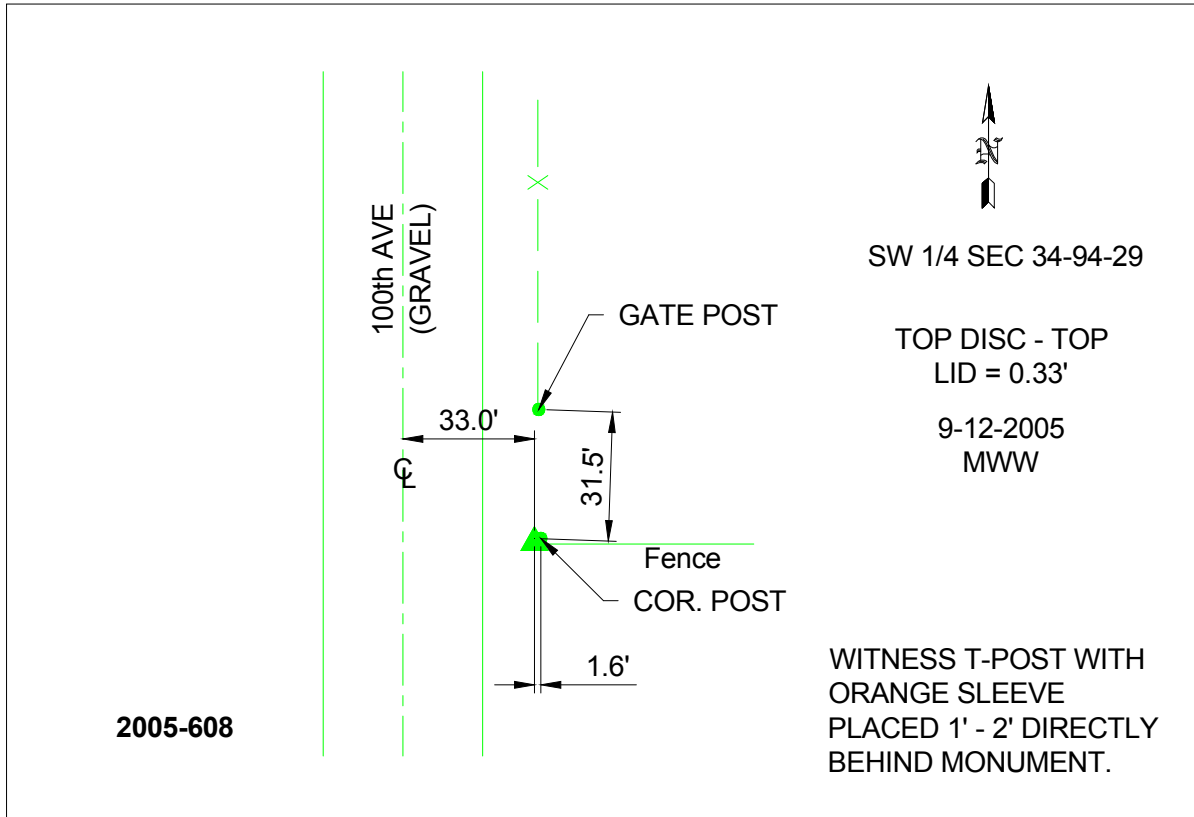
Latitude: **42°54'29.32041"N**

Longitude: **94°15'58.72366"W**

Mapping Angle: **-0°31'10"**

Combination Scale Factor: **0.999904510**

Monument Type: Berntsen Top Security Rod Monument with a 2-1/2" dia. domed survey cap and permanent magnet encased in a 6"dia. PVC pipe with a NGS style aluminum access cover.



This document was prepared by DCI and GBC for use by Kossuth County, Iowa.