

Kossuth County, Iowa
Iowa North Zone (1401)
Horiz. Datum: NAD83(1996)
Vert. Datum: NAVD 1988
US Survey Feet
2005

Point Name: **610**

Designation: 2005-610 Kossuth Co GPS Control Point

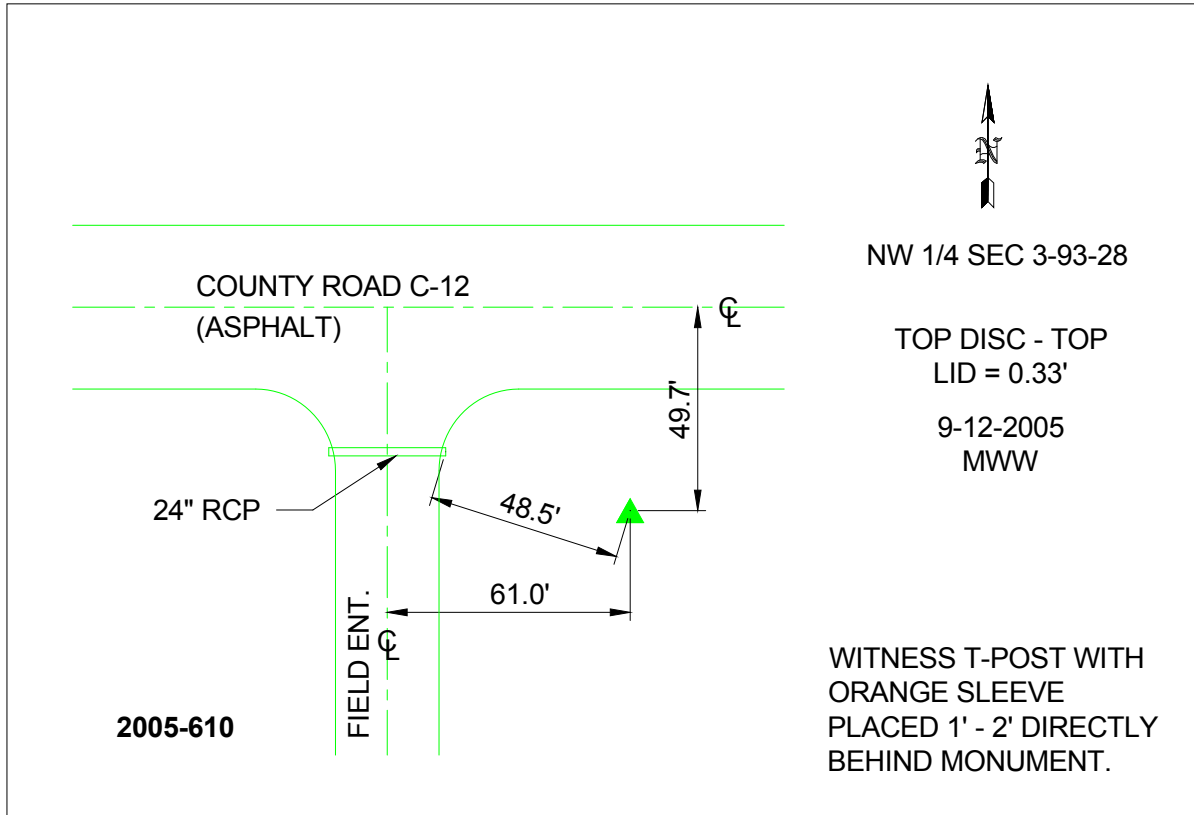
Northing: **3794664.17**sft Easting: **4747968.11**sft

Orthometric Height: **1145.82**sft Ellipsoid Height: **1049.78**sft **Geoid03**

Latitude: **42°54'29.34102"N** Longitude: **94°08'48.48769"W**

Mapping Angle: **-0°26'18"** Combination Scale Factor: **0.999904070**

Monument Type: Berntsen Top Security Rod Monument with a 2-1/2" dia. domed survey cap and permanent magnet encased in a 6"dia. PVC pipe with a NGS style aluminum access cover.



This document was prepared by DCI and GBC for use by Kossuth County, Iowa.