

Kossuth County, Iowa
Iowa North Zone (1401)
Horiz. Datum: NAD83(1996)
Vert. Datum: NAVD 1988
US Survey Feet
2005

Point Name: **611**

Designation: 2005-611 Kossuth Co GPS Control Point

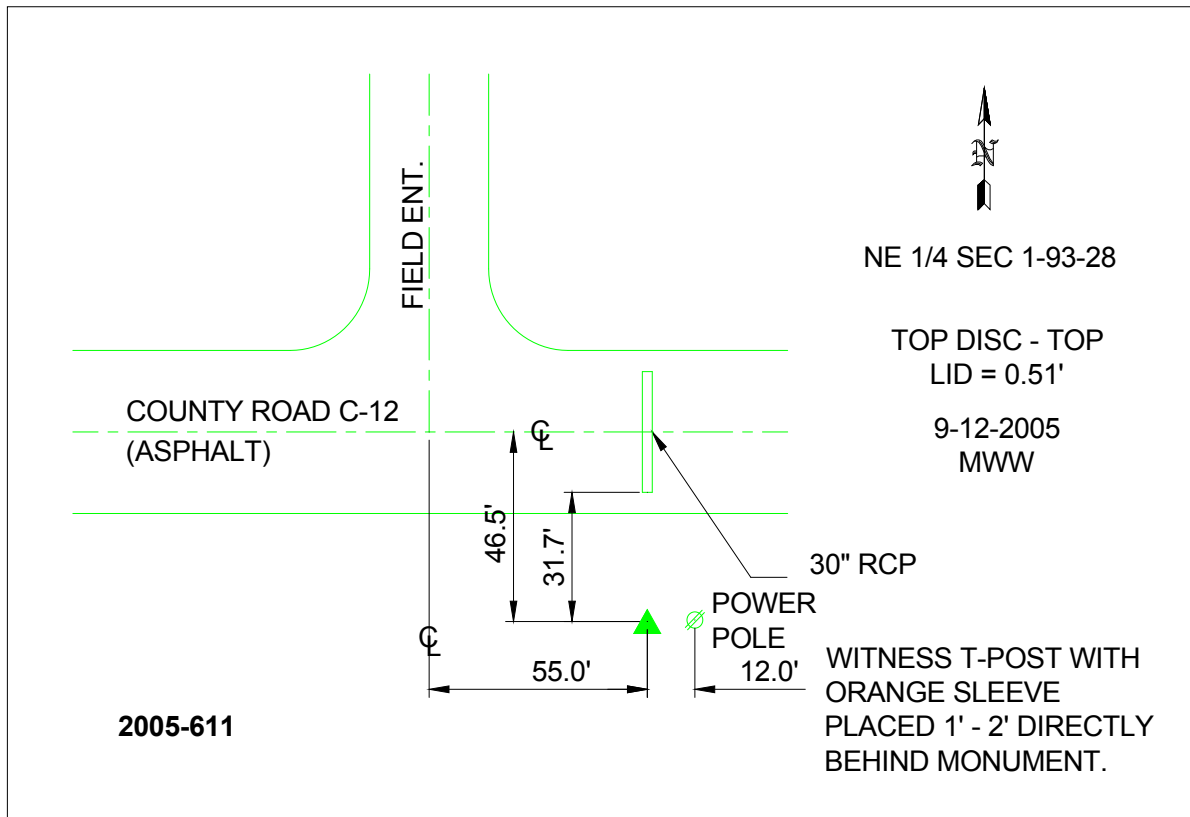
Northing: **3794529.51**sft Easting: **4761908.63**sft

Orthometric Height: **1154.65**sft Ellipsoid Height: **1058.55**sft **Geoid03**

Latitude: **42°54'29.02212"N** Longitude: **94°05'41.15461"W**

Mapping Angle: **-0°24'11"** Combination Scale Factor: **0.999903650**

Monument Type: Berntsen Top Security Rod Monument with a 2-1/2" dia. domed survey cap and permanent magnet encased in a 6"dia. PVC pipe with a NGS style aluminum access cover.



This document was prepared by DCI and GBC for use by Kossuth County, Iowa.