

Kossuth County, Iowa
Iowa North Zone (1401)
Horiz. Datum: NAD83(1996)
Vert. Datum: NAVD 1988
US Survey Feet
2005

Point Name: **612**

Designation: 2005-612 Kossuth Co GPS Control Point

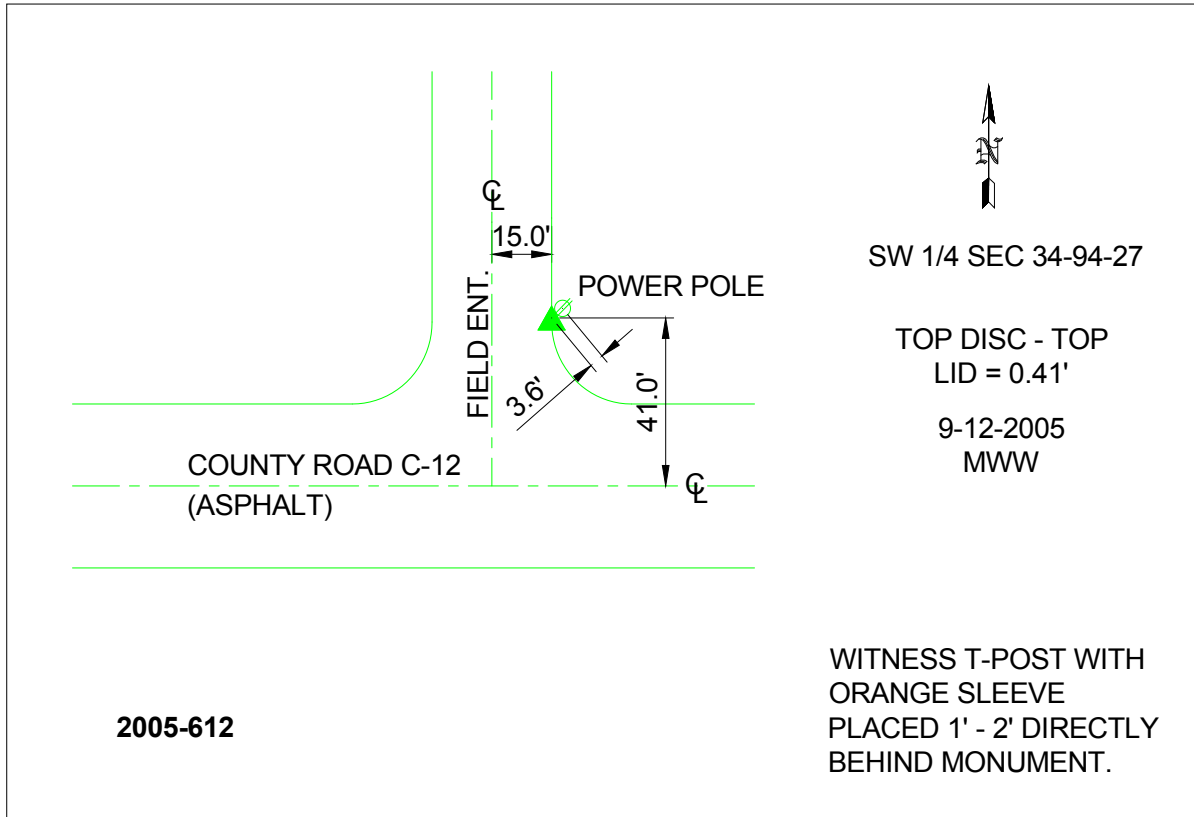
Northing: **3794361.44sft** Easting: **4779678.64sft**

Orthometric Height: **1155.75sft** Ellipsoid Height: **1059.73sft** **Geoid03**

Latitude: **42°54'28.52799"N** Longitude: **94°01'42.36210"W**

Mapping Angle: **-0°21'29"** Combination Scale Factor: **0.999903580**

Monument Type: Berntsen Top Security Rod Monument with a 2-1/2" dia. domed survey cap and permanent magnet encased in a 6"dia. PVC pipe with a NGS style aluminum access cover.



This document was prepared by DCI and GBC for use by Kossuth County, Iowa.