

Kossuth County, Iowa
Iowa North Zone (1401)
Horiz. Datum: NAD83(1996)
Vert. Datum: NAVD 1988
US Survey Feet
2005

Point Name: **613**

Designation: 2005-613 Kossuth Co GPS Control Point

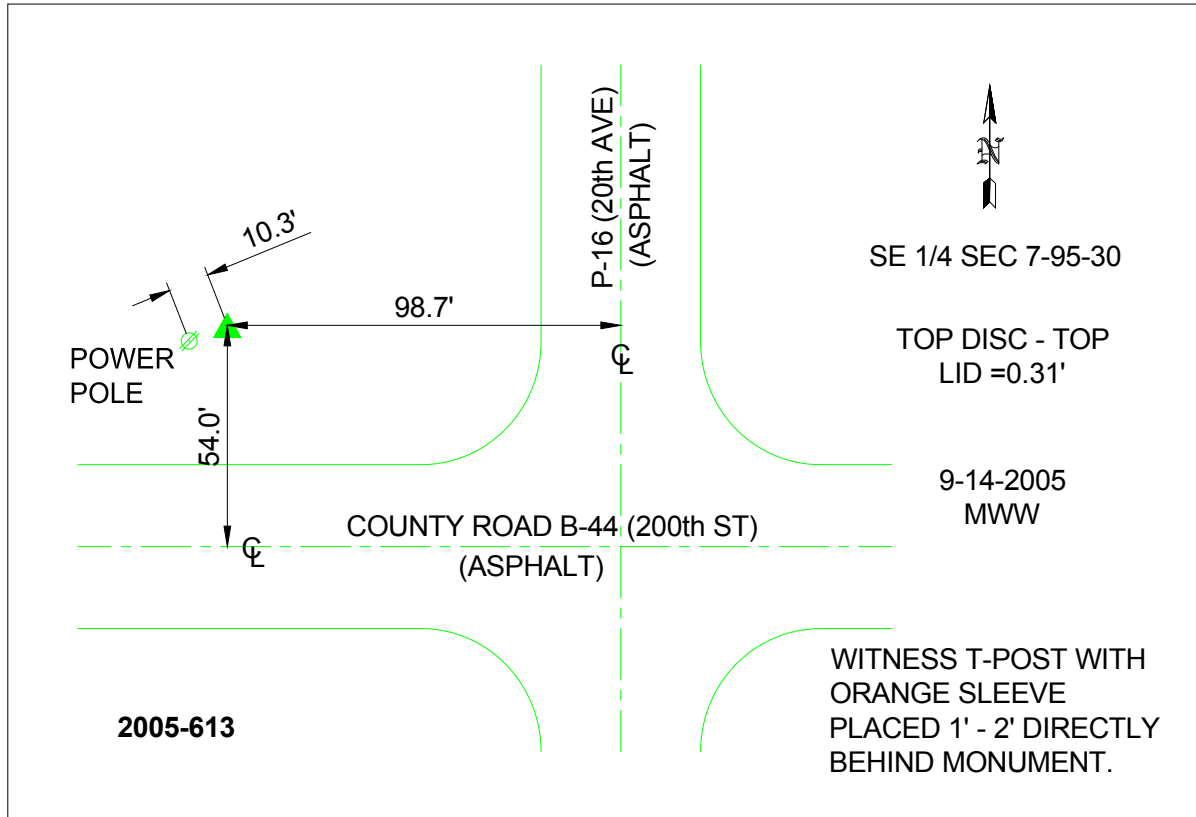
Northing: **3848152.70sft** Easting: **4674447.70sft**

Orthometric Height: **1193.06sft** Ellipsoid Height: **1098.90sft** **Geoid03**

Latitude: **43°03'10.91311"N** Longitude: **94°25'24.20708"W**

Mapping Angle: **-0°37'33"** Combination Scale Factor: **0.999915530**

Monument Type: Berntsen Top Security Rod Monument with a 2-1/2" dia. domed survey cap and permanent magnet encased in a 6"dia. PVC pipe with a NGS style aluminum access cover.



This document was prepared by DCI and GBC for use by Kossuth County, Iowa.