

Kossuth County, Iowa
Iowa North Zone (1401)
Horiz. Datum: NAD83(1996)
Vert. Datum: NAVD 1988
US Survey Feet
2005

Point Name: **615**

Designation: 2005-615 Kossuth Co GPS Control Point

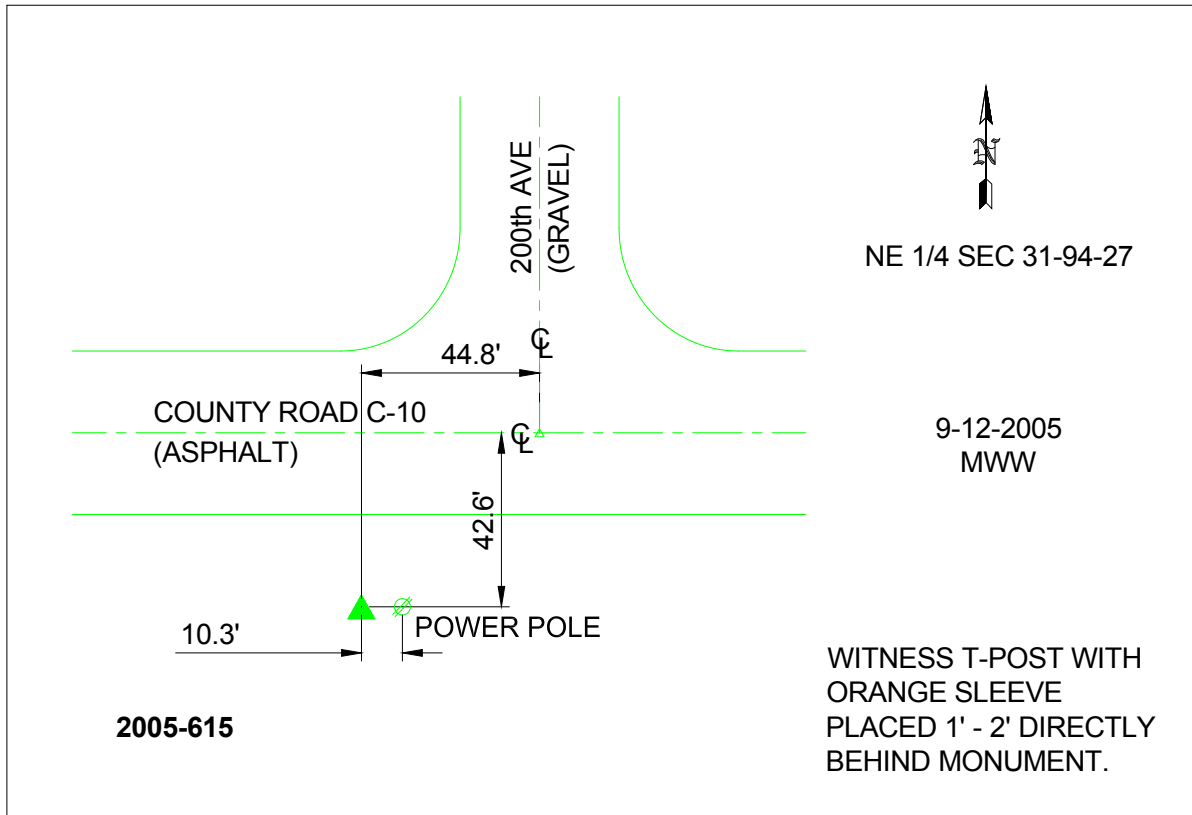
Northing: **3799599.98sft** Easting: **4768833.74sft**

Orthometric Height: **1135.58sft** Ellipsoid Height: **1039.45sft** **Geoid03**

Latitude: **42°55'19.57666"N** Longitude: **94°04'08.55972"W**

Mapping Angle: **-0°23'08"** Combination Scale Factor: **0.999905620**

Monument Type: Berntsen Top Security Rod Monument with a 2-1/2" dia. domed survey cap and permanent magnet encased in a 6"dia. PVC pipe with a NGS style aluminum access cover.



This document was prepared by DCI and GBC for use by Kossuth County, Iowa.