

Kossuth County, Iowa
Iowa North Zone (1401)
Horiz. Datum: NAD83(1996)
Vert. Datum: NAVD 1988
US Survey Feet
2005

Note: The original 616 has been destroyed and was replaced in 2011 with 629

Point Name: **616**

Designation: ~~2005-616 Kossuth Co GPS Control Point~~

Northing: ~~3859643.57~~sft Easting: ~~4787997.44~~sft

Orthometric Height: ~~1251.51~~sft Ellipsoid Height: ~~1155.62~~sft **Geoid03**

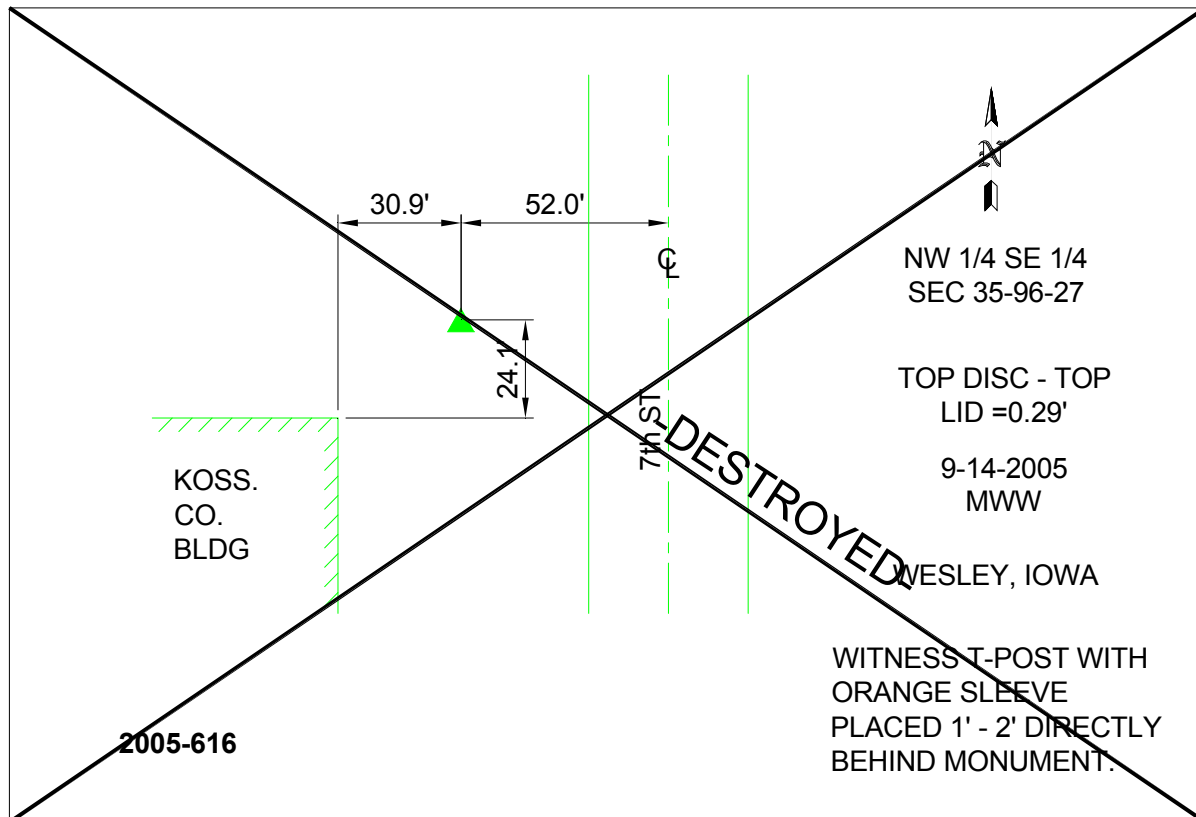
Latitude: **43°05'13.84288"N**

Longitude: **93°59'55.75709"W**

Mapping Angle: ~~-0°20'17"~~

Combination Scale Factor: **0.999917000**

Monument Type: Berntsen Top Security Rod Monument with a 2-1/2" dia. domed survey cap and permanent magnet encased in a 6"dia. PVC pipe with a NGS style aluminum access cover.



This document was prepared by DCI and GBC for use by Kossuth County, Iowa.