

Kossuth County, Iowa
Iowa North Zone (1401)
Horiz. Datum: NAD83(1996)
Vert. Datum: NAVD 1988
US Survey Feet
2005

Point Name: **621**

Designation: 2005-621 Kossuth Co GPS Control Point

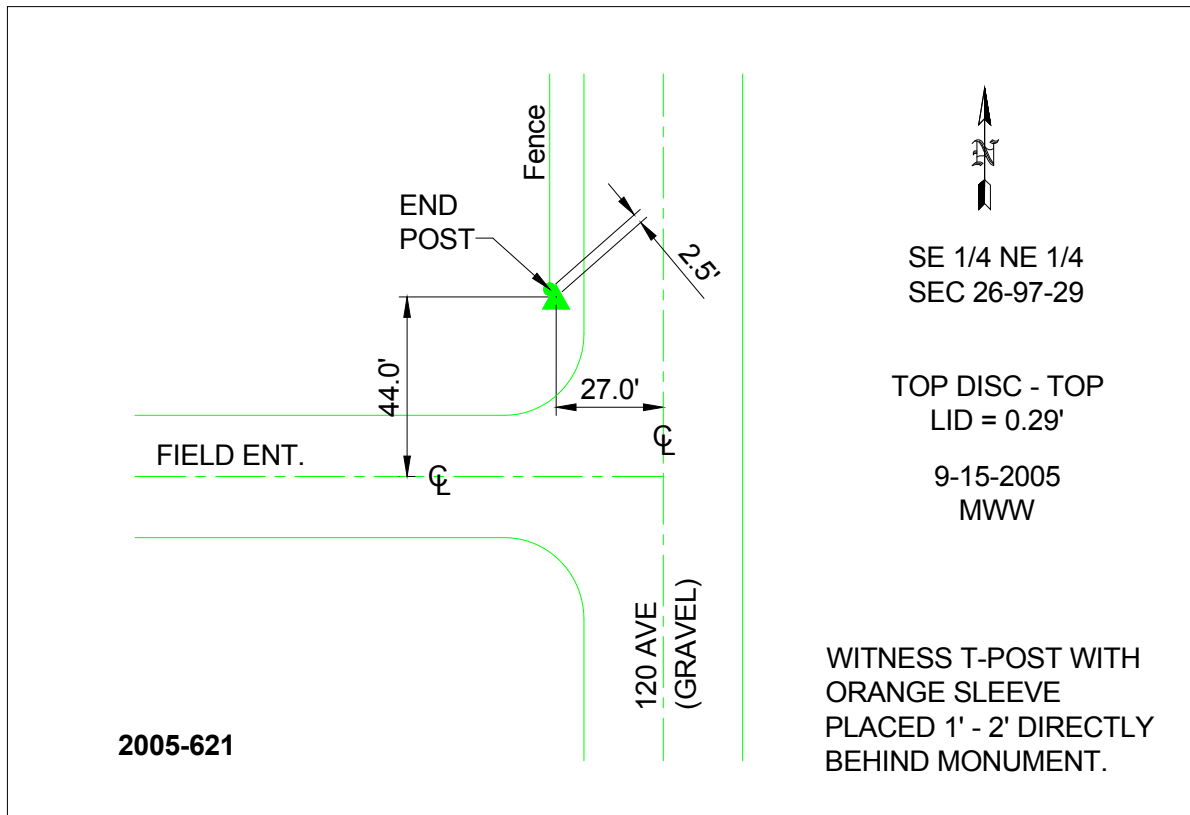
Northing: **3897056.38**sft Easting: **4727454.87**sft

Orthometric Height: **1165.99**sft Ellipsoid Height: **1071.65**sft **Geoid03**

Latitude: **43°11'19.03088"N** Longitude: **94°13'35.94927"W**

Mapping Angle: **-0°29'33"** Combination Scale Factor: **0.999935540**

Monument Type: Berntsen Top Security Rod Monument with a 2-1/2" dia. domed survey cap and permanent magnet encased in a 6"dia. PVC pipe with a NGS style aluminum access cover.



This document was prepared by DCI and GBC for use by Kossuth County, Iowa.