

Kossuth County, Iowa
Iowa North Zone (1401)
Horiz. Datum: NAD83(1996)
Vert. Datum: NAVD 1988
US Survey Feet
2005

Point Name: **625**

Designation: 2005-625 Kossuth Co GPS Control Point

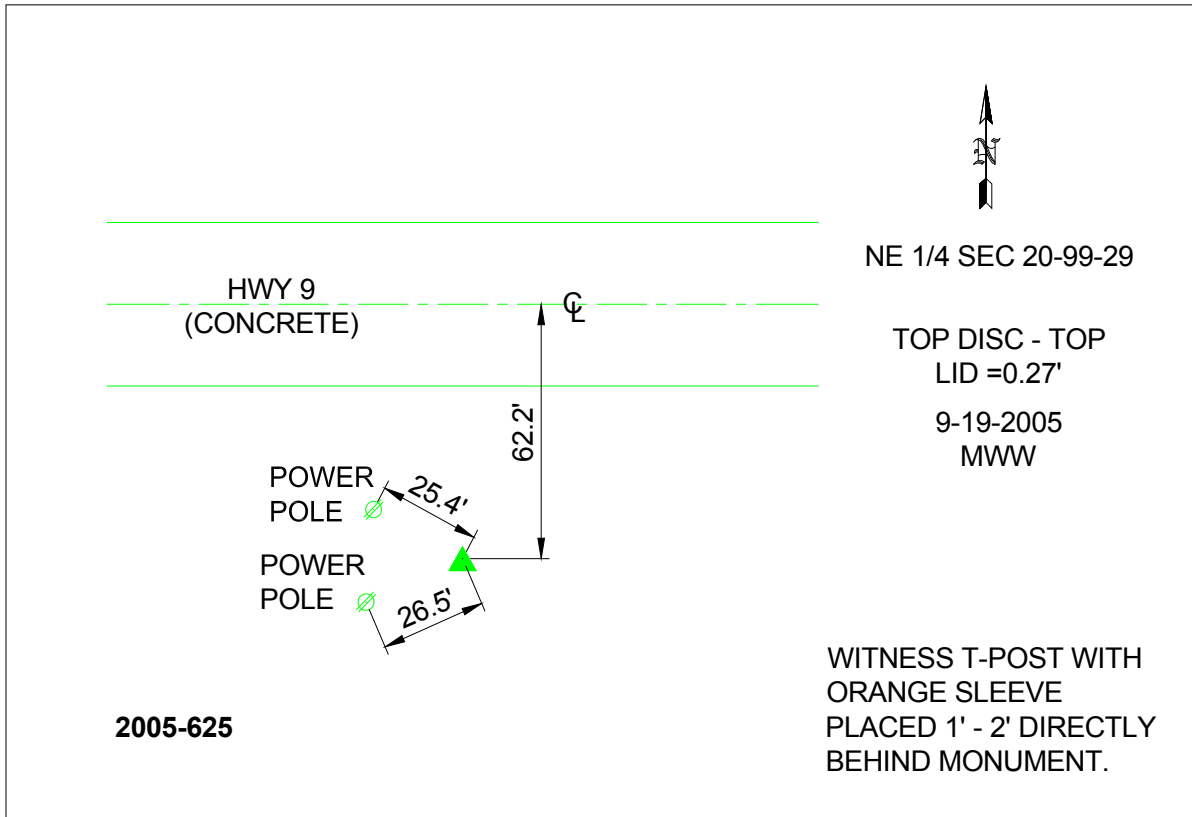
Northing: **3968876.70**sft Easting: **4710954.93**sft

Orthometric Height: **1173.07**sft Ellipsoid Height: **1079.74**sft **Geoid03**

Latitude: **43°23'06.88260"N** Longitude: **94°17'27.73286"W**

Mapping Angle: **-0°32'10"** Combination Scale Factor: **0.999972310**

Monument Type: Berntsen Top Security Rod Monument with a 2-1/2" dia. domed survey cap and permanent magnet encased in a 6"dia. PVC pipe with a NGS style aluminum access cover.



This document was prepared by DCI and GBC for use by Kossuth County, Iowa.