

Kossuth County, Iowa
Iowa North Zone (1401)
Horiz. Datum: NAD83(1996)
Vert. Datum: NAVD 1988
US Survey Feet
2011

Point Name: **629**

Designation: 2011-629 Kossuth Co GPS Control Point

Northing: **3859548.15sft** Easting: **4787806.56sft**

Orthometric Height: **1250.85sft** Ellipsoid Height: **1154.93sft** **Geoid09**

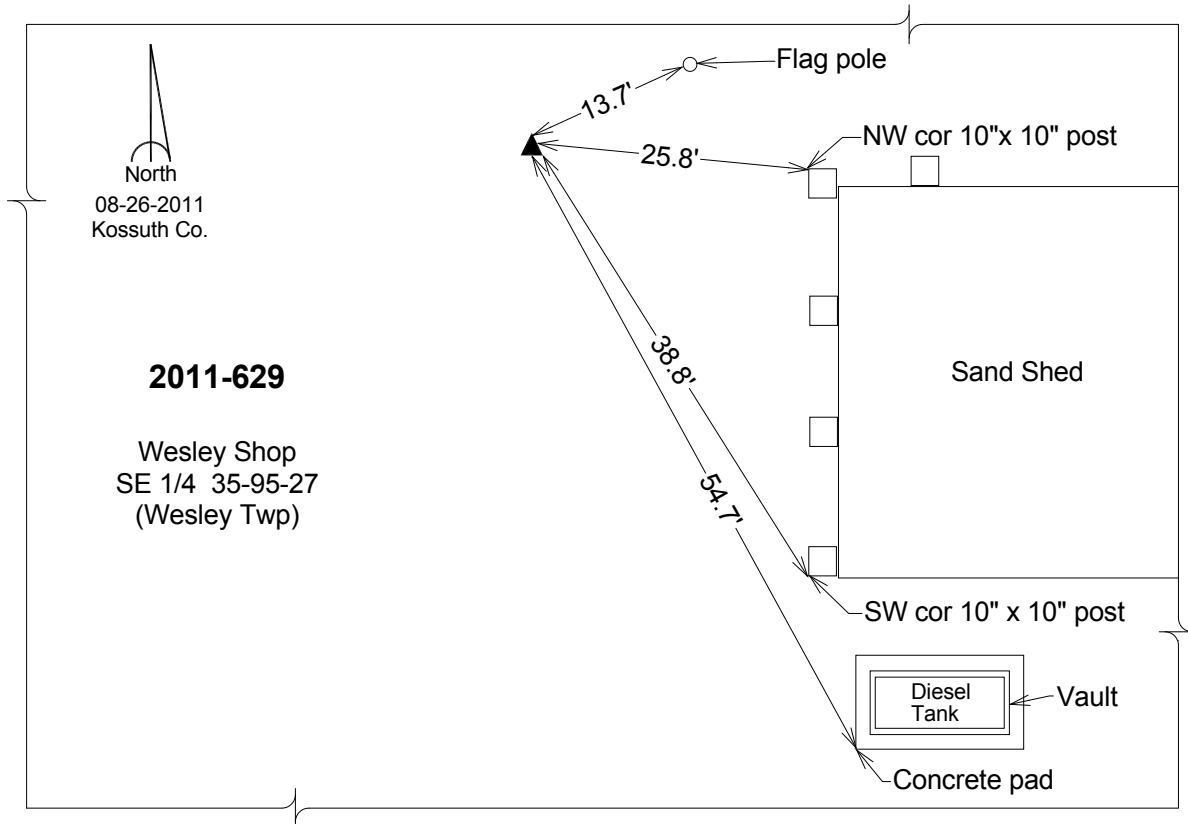
Latitude: **43°05'12.88922"N**

Longitude: **93°59'58.32175"W**

Mapping Angle: **-0°20'19"**

Combination Scale Factor: **0.999917004**

Monument Type: Berntsen Top Security Rod Monument with a 2-1/2" dia. domed survey cap and permanent magnet encased in a 6"dia. PVC pipe with a NGS style aluminum access cover.



This document was prepared by DCI and GBC for use by Kossuth County, Iowa.