

**Kossuth County, Iowa**  
Iowa North Zone (1401)  
Horiz. Datum: NAD83(1996)  
Vert. Datum: NAVD 1988  
US Survey Feet  
**2011**

Point Name: **630**

**Designation:** 2011-630 Kossuth Co GPS Control Point

Northing: **3874030.21**sft Easting: **4779788.29**sft

Orthometric Height: **1195.77**sft Ellipsoid Height: **1100.17**sft **Geoid09**

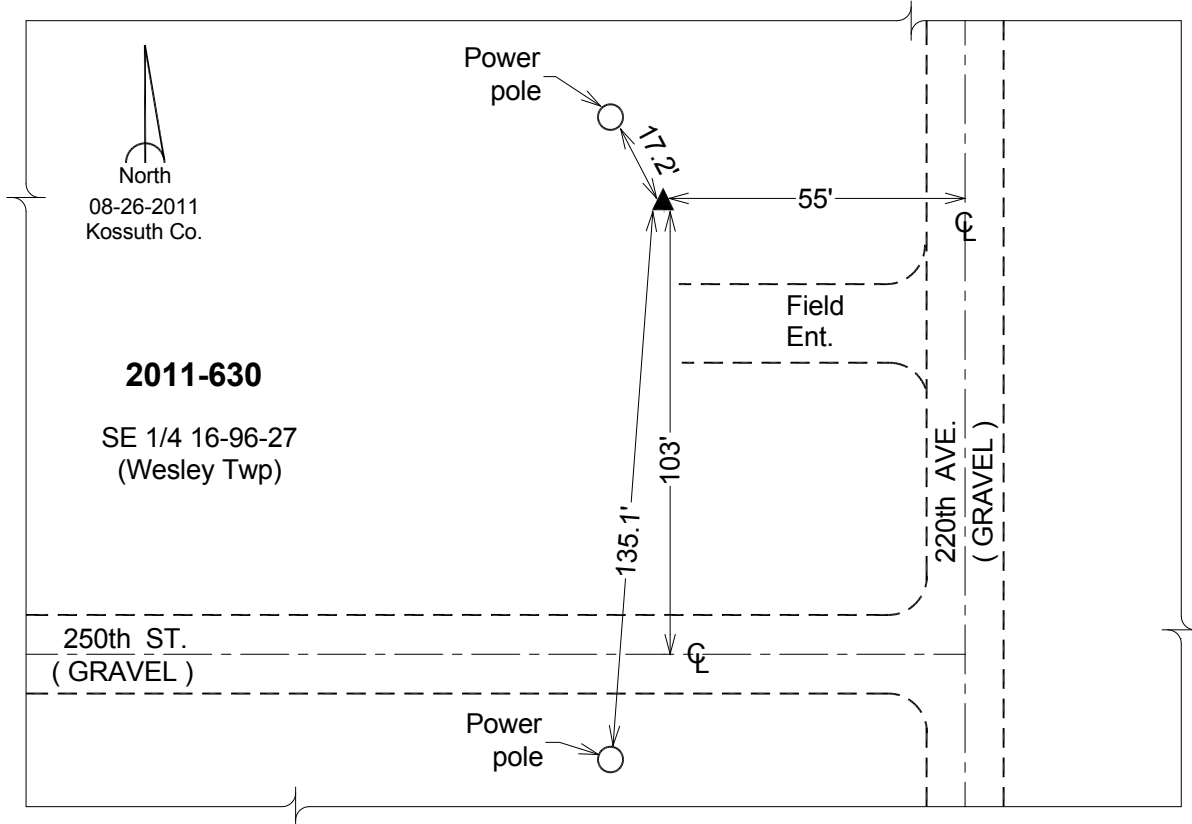
Latitude: **43°07'35.44712"N**

Longitude: **94°01'47.59874"W**

Mapping Angle: **-0°21'33"**

Combination Scale Factor: **0.999924912**

**Monument Type:** Berntsen Top Security Rod Monument with a 2-1/2" dia. domed survey cap and permanent magnet encased in a 6"dia. PVC pipe with a NGS style aluminum access cover.



*This document was prepared by DCI and GBC for use by Kossuth County, Iowa.*