

Kossuth County, Iowa
Iowa North Zone (1401)
Horiz. Datum: NAD83(1996)
Vert. Datum: NAVD 1988
US Survey Feet
2011

Point Name: **631**

Designation: 2011-631 Kossuth Co GPS Control Point

Northing: **3953023.05**sft Easting: **4734695.72**sft

Orthometric Height: **1160.97**sft Ellipsoid Height: **1067.02**sft **Geoid09**

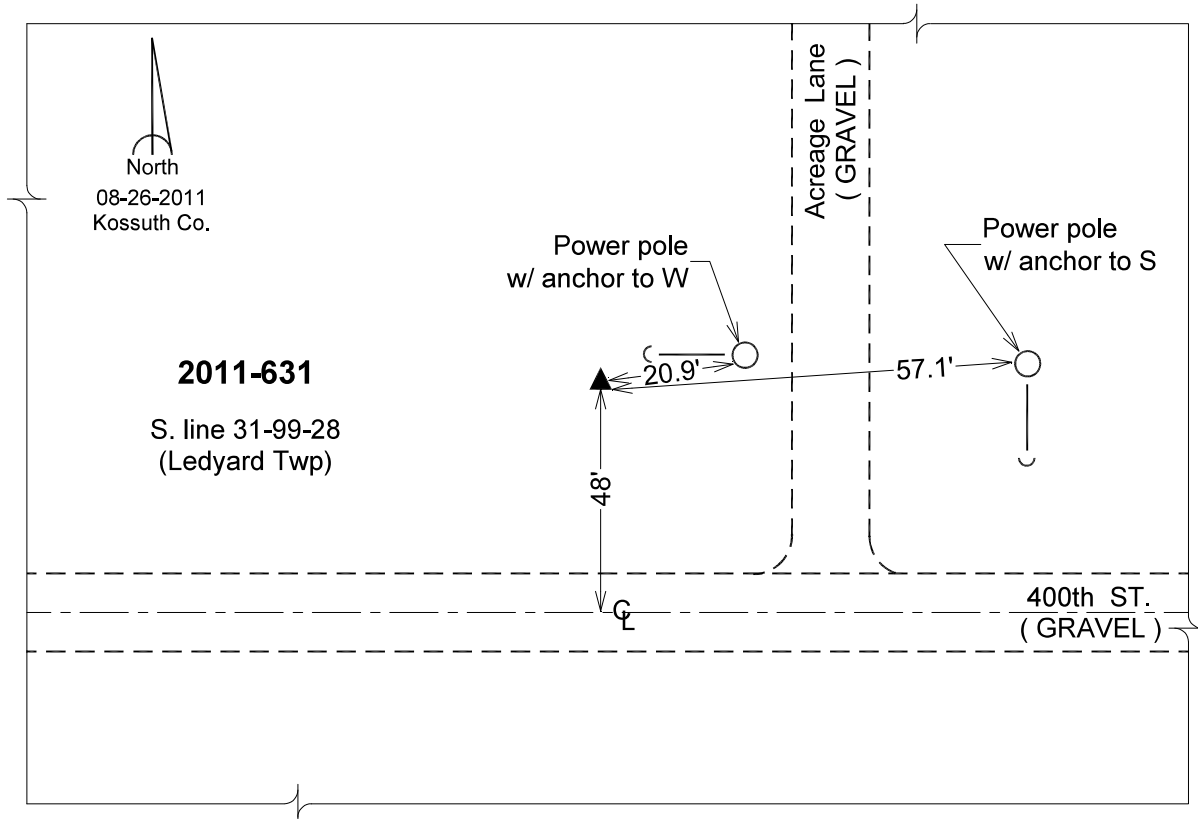
Latitude: **43°20'32.38183"N**

Longitude: **94°12'04.47933"W**

Mapping Angle: **-0°28'31"**

Combination Scale Factor: **0.999963794**

Monument Type: Berntsen Top Security Rod Monument with a 2-1/2" dia. domed survey cap and permanent magnet encased in a 6"dia. PVC pipe with a NGS style aluminum access cover.



This document was prepared by DCI and GBC for use by Kossuth County, Iowa.