

2001
Lee County, Iowa
Iowa South Zone (1402)
NAD_83(1996)

Point Number: 2

Northing: 223447.66(Ft) Easting: 2151948.43(Ft)

Northing: 68106.982(M) Easting: 655915.190(M)

Elev: 710.48(Ft) NAVD_88

Elev: 216.590(M) NAVD_88 Ellip Ht: 183.413(M) 96C Geoid Ht: -33.176(M)

Latitude: 40-35-54.380018 N Longitude: 91-39-28.265021 W

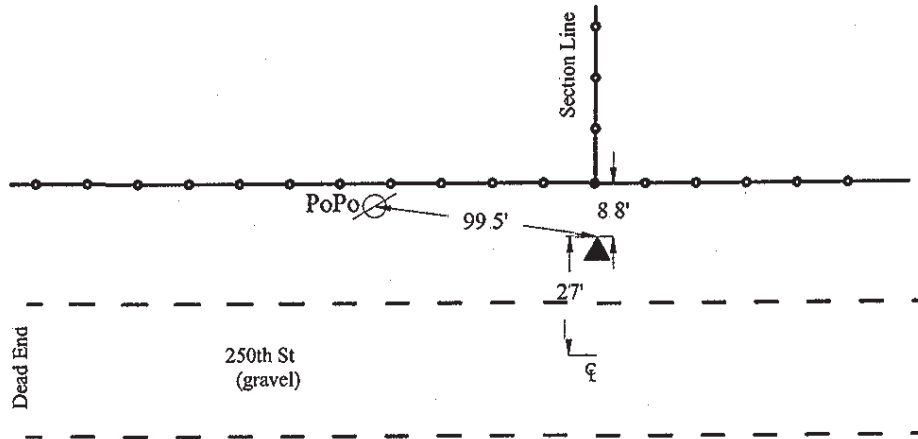
Theta: 1-12-48.33 Combination Factor: 0.99997449

Designation: LEE CO GPS CONTROL PT 2001-002

Monument Type: 5/8" dia driven aluminum rod with a 2-1/2" dia aluminum cap and permanent magnet encased in a 5" dia PVC pipe with an aluminum access cover.

Remarks: 30ft N of 250th St. on line with the N/S section line fence near the SE Cor of Sec 16 T67N R7W.

Date Printed June 22, 2001



4
2001-002
BRS/RKE/SBS
March 6, 2001

Set NGS style rod
monument with
access cover