

2001
Lee County, Iowa
Iowa South Zone (1402)
NAD_83(1996)

Point Number: 6

Northing: 285993.73(Ft) Easting: 2149908.31(Ft)

Northing: 87171.061(M) Easting: 655293.363(M)

Elev: 706.40(Ft) NAVD_88

Elev: 215.323(M) NAVD_88 Ellip Ht: 182.173(M) 96C Geoid Ht: -33.150(M)

Latitude: 40-46-12.703201 N Longitude: 91-39-37.559770 W

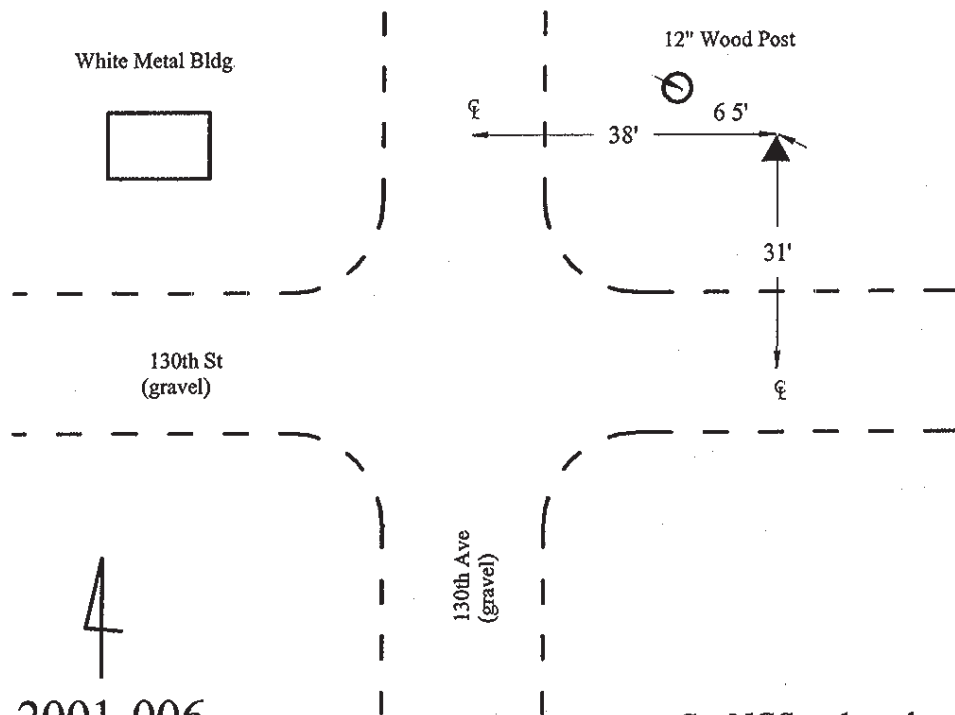
Theta: 1-12-42.21 Combination Factor: 0.99994787

Designation: LEE CO GPS CONTROL PT 2001-006

Monument Type: 5/8" dia driven aluminum rod with a 2-1/2" dia aluminum cap and permanent magnet encased in a 5" dia PVC pipe with an aluminum access cover.

Remarks: 30ft N of 130th St., 40ft E of 130th Ave near the SW Cor of Sec 15 T69N R7W.

Date Printed June 22, 2001



2001-006
BRS/RKE/SBS
March 6, 2001

Set NGS style rod
monument with
access cover