

2001  
Lee County, Iowa  
Iowa South Zone (1402)  
NAD\_83(1996)

Point Number: 9

Northing: 207847.73(Ft)      Easting: 2164499.08(Ft)

Northing: 63352.113(M)      Easting: 659740.638(M)

Elev: 545.07(Ft) NAVD\_88

Elev: 166.160(M) NAVD\_88      Ellip Ht: 132.974(M)      96C Geoid Ht: -33.186(M)

Latitude: 40-33-17.610476 N      Longitude: 91-36-49.987645 W

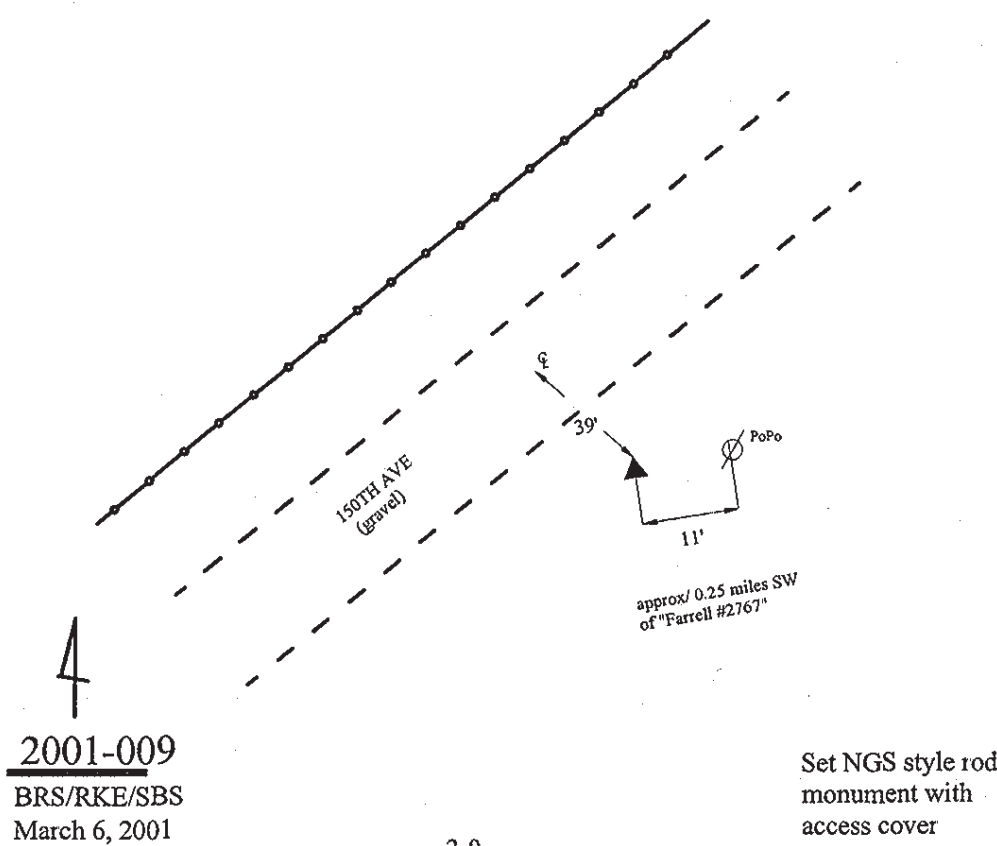
Theta: 1-14-32.59      Combination Factor: 0.99999061

Designation: LEE CO GPS CONTROL PT 2001-009

**Monument Type:** 5/8" dia driven aluminum rod with a 2-1/2" dia aluminum cap and permanent magnet encased in a 5" dia PVC pipe with an aluminum access cover.

**Remarks:** 40ft SE of 150th Ave, approx. 0.7 mi NE of inter. of Belfast Rd near a popo, approx 0.25 mi SW of pvt dr #2767 "Farrell" in the SW 1/4 of Sec 36 T67N R7W.

Date Printed June 22, 2001



2001-009  
BRS/RKE/SBS  
March 6, 2001