

2001
Lee County, Iowa
Iowa South Zone (1402)
NAD_83(1996)

Point Number: 13

Northing: 270299.94(Ft) Easting: 2166123.11(Ft)

Northing: 82387.585(M) Easting: 660235.644(M)

Elev: 714.39(Ft) NAVD_88

Elev: 217.754(M) NAVD_88 Ellip Ht: 184.575(M) 96C Geoid Ht: -33.179(M)

Latitude: 40-43-34.223537 N Longitude: 91-36-11.311190 W

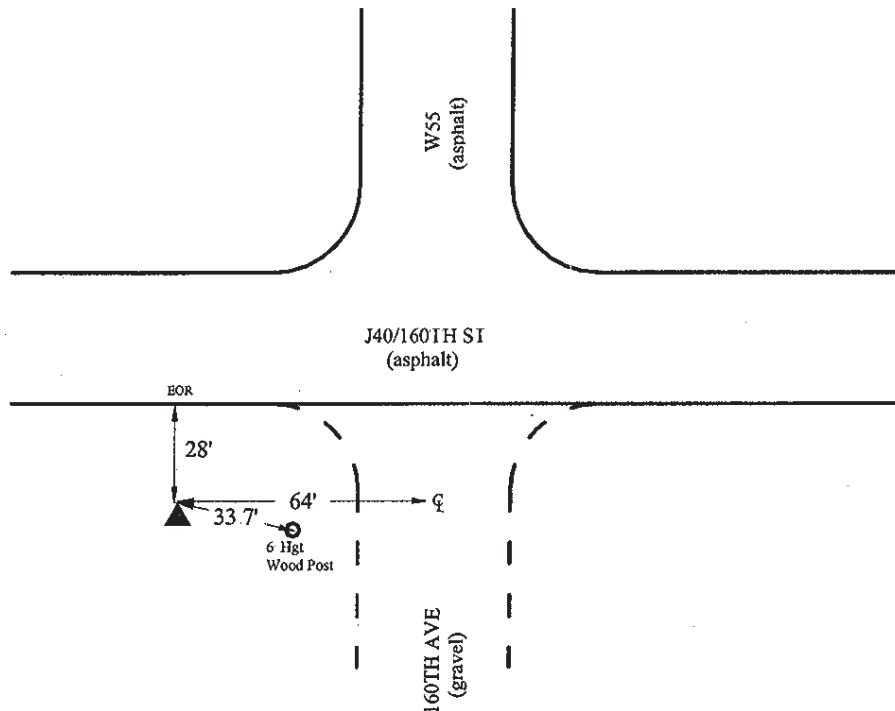
Theta: 1-14-58.06 Combination Factor: 0.99995351

Designation: LEE CO GPS CONTROL PT 2001-013

Monument Type: 5/8" dia driven aluminum rod with a 2-1/2" dia aluminum cap and permanent magnet encased in a 5" dia PVC pipe with an aluminum access cover.

Remarks: 40ft S of 160th St. (J 40), 65ft W of 160th Ave near the NE Cor of Sec 1 T68N R7W.

Date Printed June 22, 2001



4
2001-013
BRS/RKE/SBS
March 6, 2001

Set NGS style rod
monument with
access cover