

2001
Lee County, Iowa
Iowa South Zone (1402)
NAD_83(1996)

Point Number: 14

Northing: 286260.99(Ft) Easting: 2165920.33(Ft)

Northing: 87252.525(M) Easting: 660173.836(M)

Elev: 691.43(Ft) NAVD_88

Elev: 210.756(M) NAVD_88 Ellip Ht: 177.590(M) 96C Geoid Ht: -33.166(M)

Latitude: 40-46-11.945119 N Longitude: 91-36-09.422649 W

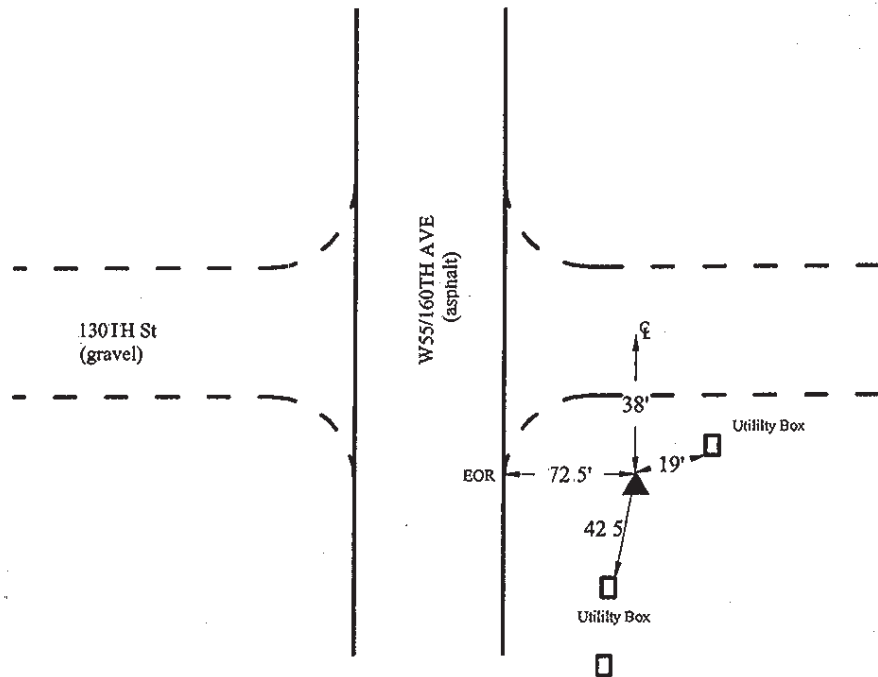
Theta: 1-14-59.31 Combination Factor: 0.99994861

Designation: LEE CO GPS CONTROL PT 2001-014

Monument Type: 5/8" dia driven aluminum rod with a 2-1/2" dia aluminum cap and permanent magnet encased in a 5" dia PVC pipe with an aluminum access cover.

Remarks: 40ft S of 130th St., 85ft E of 160th Ave (W 55) near the NW Cor of Sec 19 T69N R6W.

Date Printed June 22, 2001



2001-014
BRS/RKE/SBS
March 6, 2001

Set NGS style rod
monument with
access cover