

2001
Lee County, Iowa
Iowa South Zone (1402)
NAD_83(1996)

Point Number: 15

Northing: 302184.40(Ft) Easting: 2165508.88(Ft)

Northing: 92105.988(M) Easting: 660048.426(M)

Elev: 666.46(Ft) NAVD_88

Elev: 203.144(M) NAVD_88 Ellip Ht: 169.991(M) 96C Geoid Ht: -33.153(M)

Latitude: 40-48-49.339393 N Longitude: 91-36-10.255530 W

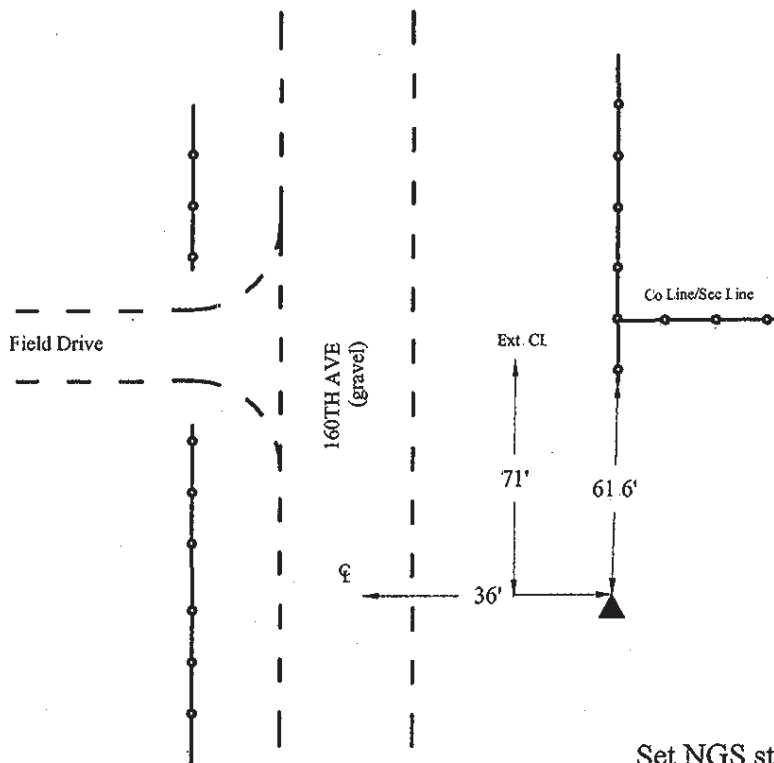
Theta: 1-14-58.76 Combination Factor: 0.99994439

Designation: LEE CO GPS CONTROL PT 2001-015

Monument Type: 5/8" dia driven aluminum rod with a 2-1/2" dia aluminum cap and permanent magnet encased in a 5" dia PVC pipe with an aluminum access cover.

Remarks: 70ft S of section fence to E and field drv to W, 35ft E of 160th Ave near the NW Cor of Sec 6 T69N R6W.

Date Printed June 22, 2001



4
2001-015
BRS/RKE/SBS
March 6, 2001

Set NGS style rod
monument with
access cover