

2001
Lee County, Iowa
Iowa South Zone (1402)
NAD_83(1996)

Point Number: 16

Northing: 175809.81(Ft) Easting: 2183762.21(Ft)

Northing: 53586.937(M) Easting: 665612.051(M)

Elev: 537.85(Ft) NAVD_88

Elev: 163.952(M) NAVD_88 Ellip Ht: 130.769(M) 96C Geoid Ht: -33.183(M)

Latitude: 40-27-56.912407 N Longitude: 91-32-49.814359 W

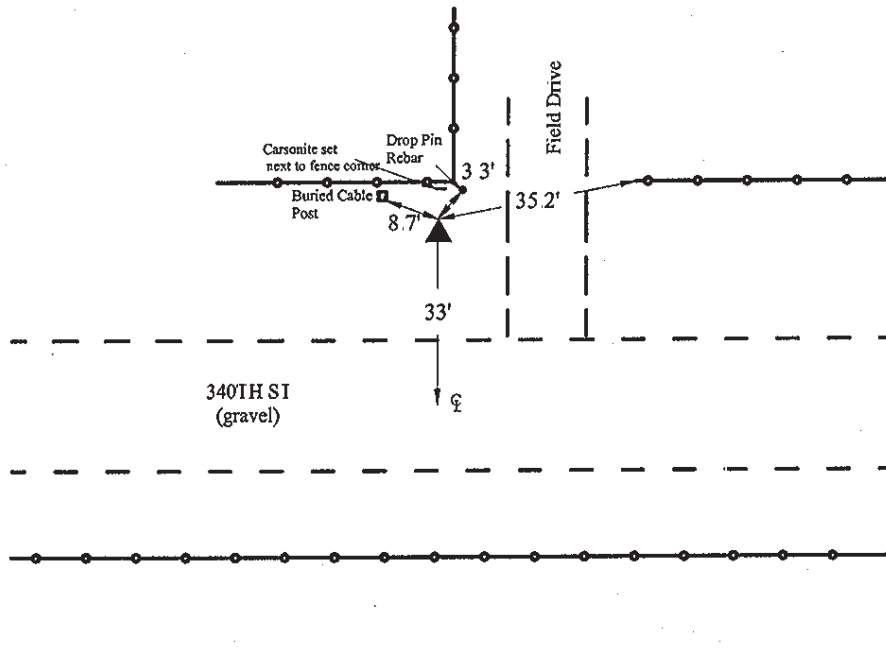
Theta: 1-17-10.79 Combination Factor: 1.00000953

Designation: LEE CO GPS CONTROL PT 2001-016

Monument Type: 5/8" dia driven aluminum rod with a 2-1/2" dia aluminum cap and permanent magnet encased in a 5" dia PVC pipe with an aluminum access cover.

Remarks: 0.1 mi E of pvt dr #1900, 35ft S of 340th St. near the NE Cor of Sec 4 T65N R6W.

Date Printed June 22, 2001



4
2001-016
BRS/RKE/SBS
March 6, 2001

Set NGS style rod
monument with
access cover