

2001  
Lee County, Iowa  
Iowa South Zone (1402)  
NAD\_83(1996)

Point Number: 17

Northing: 191853.05(Ft)      Easting: 2183433.52(Ft)

Northing: 58476.926(M)      Easting: 665511.867(M)

Elev: 619.76(Ft) NAVD\_88

Elev: 188.916(M) NAVD\_88      Ellip Ht: 155.714(M)      96C Geoid Ht: -33.202(M)

Latitude: 40-30-35.472721 N      Longitude: 91-32-49.405948 W

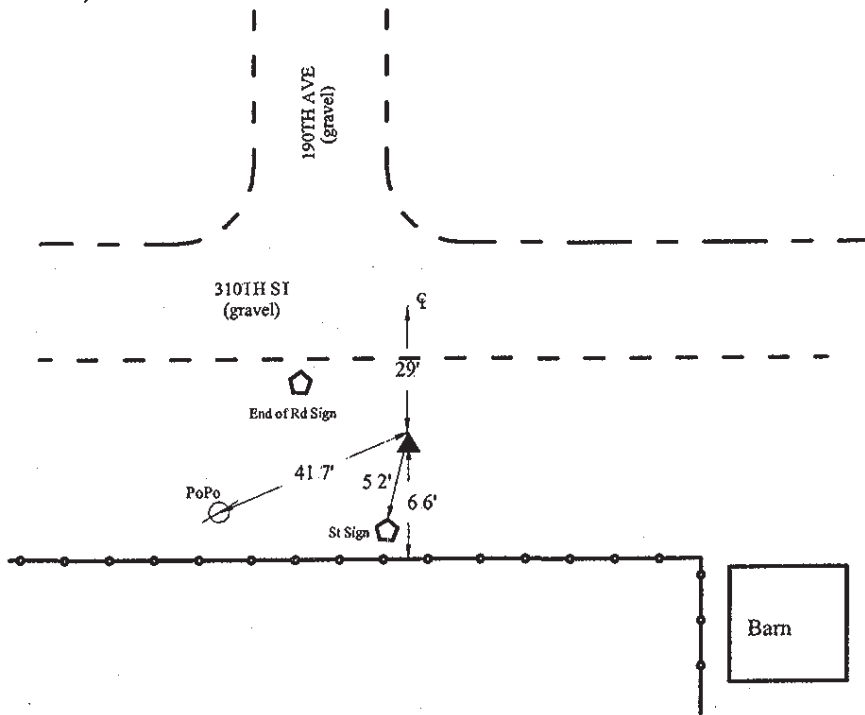
Theta: 1-17-11.06      Combination Factor: 0.99999613

Designation: LEE CO GPS CONTROL PT 2001-017

**Monument Type:** 5/8" dia driven aluminum rod with a 2-1/2" dia aluminum cap and permanent magnet encased in a 5" dia PVC pipe with an aluminum access cover.

**Remarks:** 30ft S of 310th St., 10ft E of extended CL of 190th St. near the NW Cor of Sec 22 T66N R6W.

Date Printed June 22, 2001



4  
2001-017  
BRS/RKE/SBS  
March 7, 2001

Set NGS style rod  
monument with  
access cover