

2001  
Lee County, Iowa  
Iowa South Zone (1402)  
NAD\_83(1996)

Point Number: 27

Northing: 191895.41(Ft)      Easting: 2201851.11(Ft)

Northing: 58489.838(M)      Easting: 671125.561(M)

Elev: 686.71(Ft) NAVD\_88

Elev: 209.316(M) NAVD\_88      Ellip Ht: 176.099(M)      96C Geoid Ht: -33.217(M)

Latitude: 40-30-31.736270 N      Longitude: 91-28-51.019606 W

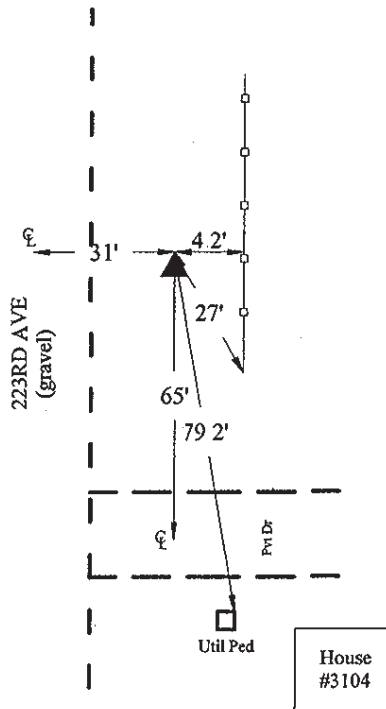
Theta: 1-19-48.08      Combination Factor: 0.99999315

Designation: LEE CO GPS CONTROL PT 2001-027

**Monument Type:** 5/8" dia driven aluminum rod with a 2-1/2" dia aluminum cap and permanent magnet encased in a 5" dia PVC pipe with an aluminum access cover.

**Remarks:** 30ft E of 223rd Ave, 120ft S of E/W section line fence near the N 1/4 Cor of Sec 19 T66N R5W.

Date Printed June 22, 2001



4

2001-027  
BRS/RKE/SBS  
March 7, 2001

Set NGS style rod  
monument with  
access cover