

2001
Lee County, Iowa
Iowa South Zone (1402)
NAD_83(1996)

Point Number: 29

Northing: 224094.66(Ft) Easting: 2193780.79(Ft)

Northing: 68304.189(M) Easting: 668665.723(M)

Elev: 687.25(Ft) NAVD_88

Elev: 209.481(M) NAVD_88 Ellip Ht: 176.251(M) 96C Geoid Ht: -33.230(M)

Latitude: 40-35-51.660259 N Longitude: 91-30-25.921177 W

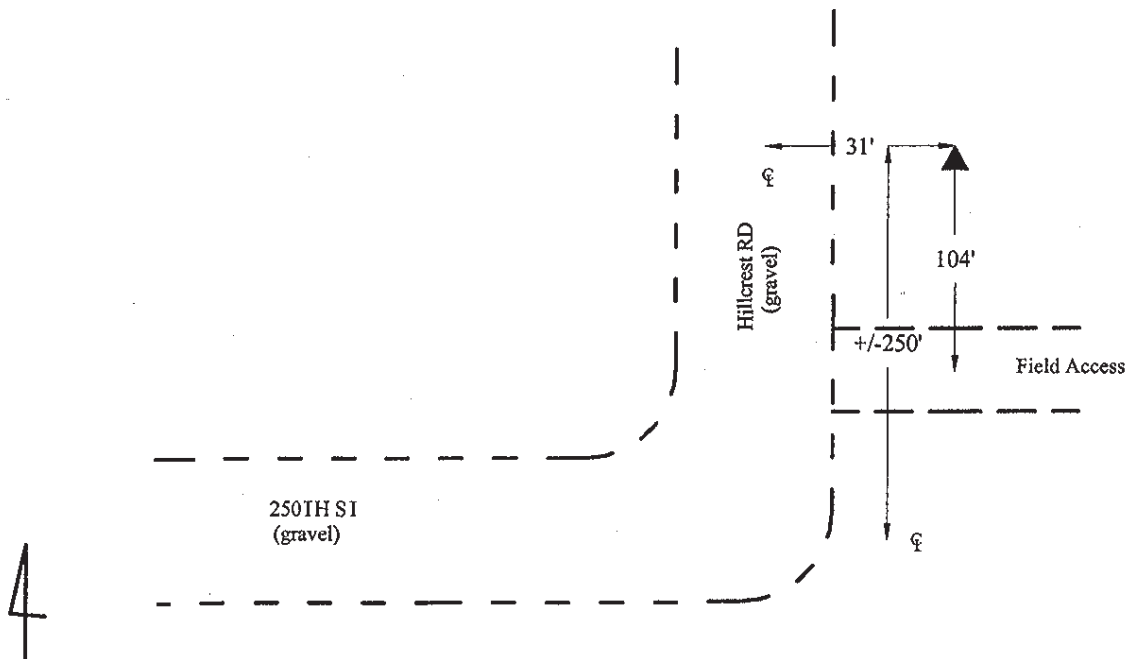
Theta: 1-18-45.57 Combination Factor: 0.99997575

Designation: LEE CO GPS CONTROL PT 2001-029

Monument Type: 5/8" dia driven aluminum rod with a 2-1/2" dia aluminum cap and permanent magnet encased in a 5" dia PVC pipe with an aluminum access cover.

Remarks: 30ft E of Hillcrest Rd, approx. 250ft N of 250th St. near the SW Cor of Sec 13 T67N R6W.

Date Printed June 22, 2001



2001-029
BRS/RKE/SBS
March 7, 2001

Set NGS style rod
monument with
access cover