

2001  
Lee County, Iowa  
Iowa South Zone (1402)  
NAD\_83(1996)

Point Number: 35

Northing: 147923.86(Ft)      Easting: 2216644.00(Ft)

Northing: 45087.283(M)      Easting: 675634.442(M)

Elev: 500.44(Ft) NAVD\_88

Elev: 152.538(M) NAVD\_88      Ellip Ht: 119.404(M)      96C Geoid Ht: -33.134(M)

Latitude: 40-23-13.928598 N      Longitude: 91-25-53.101581 W

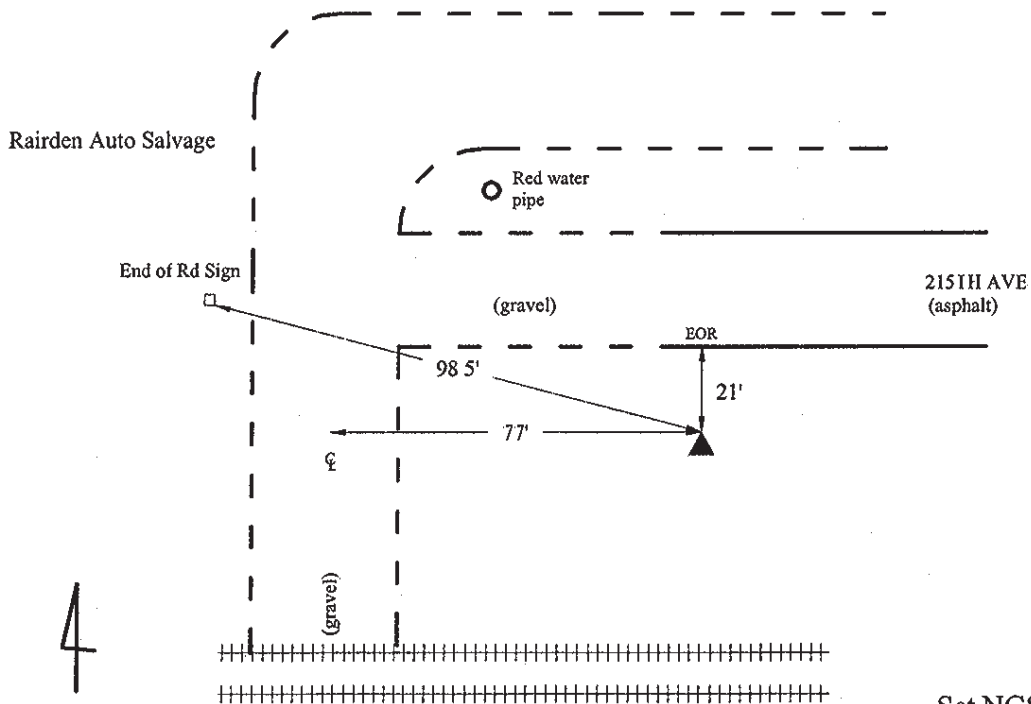
Theta: 1-21-45.28      Combination Factor: 1.00002967

Designation: LEE CO GPS CONTROL PT 2001-035

**Monument Type:** 5/8" dia driven aluminum rod with a 2-1/2" dia aluminum cap and permanent magnet encased in a 5" dia PVC pipe with an aluminum access cover.

**Remarks:** 35ft S of 215<sup>th</sup> Ave near the center to "Rairden Salvage Yard" even with W edge of end of paving of Valley Rd in the NW 1/4 of Sec 34 T65N R5W.

Date Printed June 22, 2001



2001-035  
BRS/RKE/SBS  
March 9, 2001

Set NGS style rod  
monument with  
access cover