

2001
Lee County, Iowa
Iowa South Zone (1402)
NAD_83(1996)

Point Number: 51

Northing: 239884.41(Ft) Easting: 2230627.28(Ft)

Northing: 73116.914(M) Easting: 679896.554(M)

Elev: 706.80(Ft) NAVD_88

Elev: 215.435(M) NAVD_88 Ellip Ht: 182.187(M) 96C Geoid Ht: -33.248(M)

Latitude: 40-38-19.018482 N Longitude: 91-22-23.405639 W

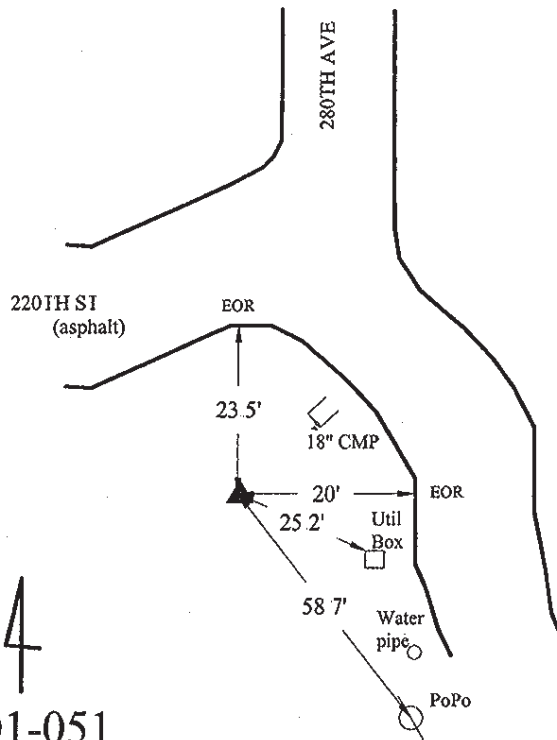
Theta: 1-24-03.41 Combination Factor: 0.99996761

Designation: LEE CO GPS CONTROL PT 2001-051

Monument Type: 5/8" dia driven aluminum rod with a 2-1/2" dia aluminum cap and permanent magnet encased in a 5" dia PVC pipe with an aluminum access cover.

Remarks: 20ft N of extended CL of 220th St., 15ft SW of curve in 280th Ave near the SE Cor of Sec 36 T68N R5W.

Date Printed June 22, 2001



4
2001-051
BRS/RKE/SBS
March 8, 2001

Set NGS style rod
monument with
access cover