

2001
Lee County, Iowa
Iowa South Zone (1402)
NAD_83(1996)

Point Number: 63

Northing: 256497.02(Ft) Easting: 2277943.58(Ft)

Northing: 78180.448(M) Easting: 694318.591(M)

Elev: 521.04(Ft) NAVD_88

Elev: 158.813(M) NAVD_88 Ellip Ht: 125.565(M) 96C Geoid Ht: -33.248(M)

Latitude: 40-40-51.226314 N Longitude: 91-12-04.168633 W

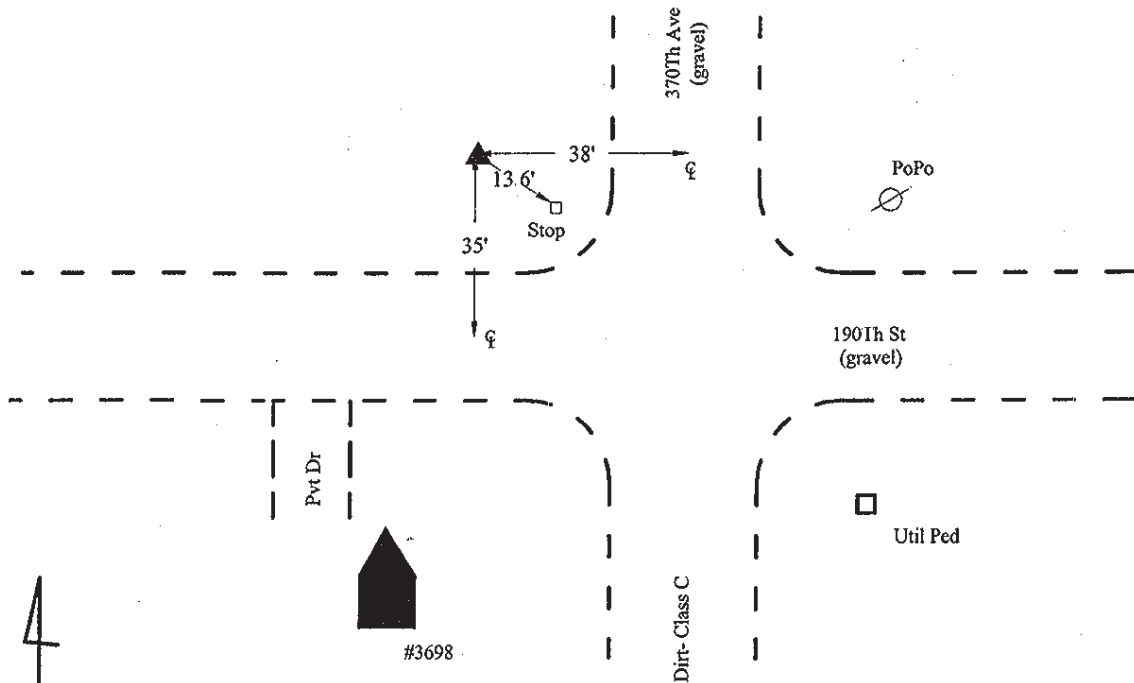
Theta: 1-30-51.30 Combination Factor: 0.99996958

Designation: LEE CO GPS CONTROL PT 2001-063

Monument Type: 5/8" dia driven aluminum rod with a 2-1/2" dia aluminum cap and permanent magnet encased in a 5" dia PVC pipe with an aluminum access cover.

Remarks: 40ft W of 370th Ave, 35ft N of 190th St. near the SE Cor of Sec 16 T68N R3W.

Date Printed June 22, 2001



4
2001-063
BRS/KRE/SBS
March 8, 2001

Set NGS style rod
monument with
access cover