

2001
Lee County, Iowa
Iowa South Zone (1402)
NAD_83(1996)

Point Number: 90

Northing: 155013.39(Ft) Easting: 2209638.22(Ft)

Northing: 47248.174(M) Easting: 673499.076(M)

Elev: 520.57(Ft) NAVD_88

Elev: 158.676(M) NAVD_88 Ellip Ht: 125.526(M) 96C Geoid Ht: -33.150(M)

Latitude: 40-24-25.598447 N Longitude: 91-27-21.454872 W

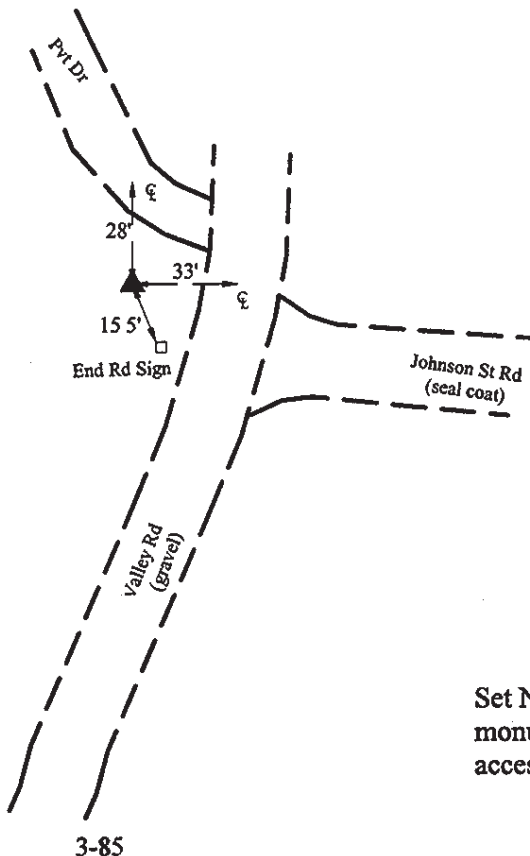
Theta: 1-20-47.08 Combination Factor: 1.00002389

Designation: LEE CO GPS CONTROL PT 2001-090

Monument Type: 5/8" dia driven aluminum rod with a 2-1/2" dia aluminum cap and permanent magnet encased in a 5" dia PVC pipe with an aluminum access cover.

Remarks: 30ft W of Valley Rd, 5ft N of extended center line of Johnson St Rd in the NE 1/4 of Sec 29 T65N R5W.

Date Printed June 22, 2001



4
2001-090
RKE/SBS
March 14, 2001

Set NGS style rod
monument with
access cover

3-85