

2001
Lee County, Iowa
Iowa South Zone (1402)
NAD_83(1996)

Point Number: 80

Northing: 241206.20(Ft) Easting: 2293922.71(Ft)

Northing: 73519.796(M) Easting: 699189.041(M)

Elev: 611.54(Ft) NAVD_88

Elev: 186.399(M) NAVD_88 Ellip Ht: 153.162(M) 96C Geoid Ht: -33.237(M)

Latitude: 40-38-15.964078 N Longitude: 91-08-42.213890 W

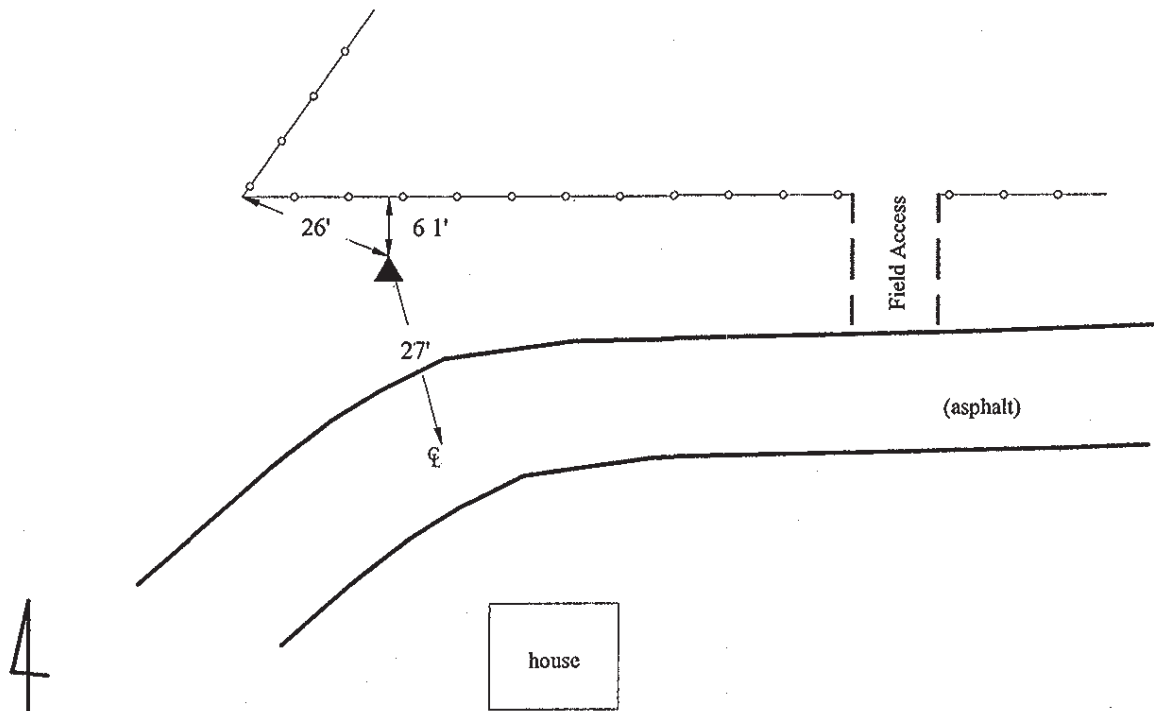
Theta: 1-33-04.33 Combination Factor: 0.99997231

Designation: **PHOTOGRAMMETRIC SURVEY MARKER**

Monument Type: 5/8" x 30" deformed rebar with a red survey cap

Remarks: 27ft N of curve in asphalt road, near the N 1/4 Cor of Sec 1 T7N R7W.

Date Printed June 22, 2001



2001-080
SBS/BRE/RKE
March 16, 2001

Set 5/8" rebar
with red cap,
flush with ground

2001
Lee County, Iowa
Iowa South Zone (1402)
NAD_83(1996)

Point Number: 82

Northing: 257163.24(Ft) Easting: 2310302.37(Ft)

Northing: 78383.514(M) Easting: 704181.572(M)

Elev: 528.74(Ft) NAVD_88

Elev: 161.160(M) NAVD_88 Ellip Ht: 127.939(M) 96C Geoid Ht: -33.221(M)

Latitude: 40-40-49.143182 N Longitude: 91-05-04.084910 W

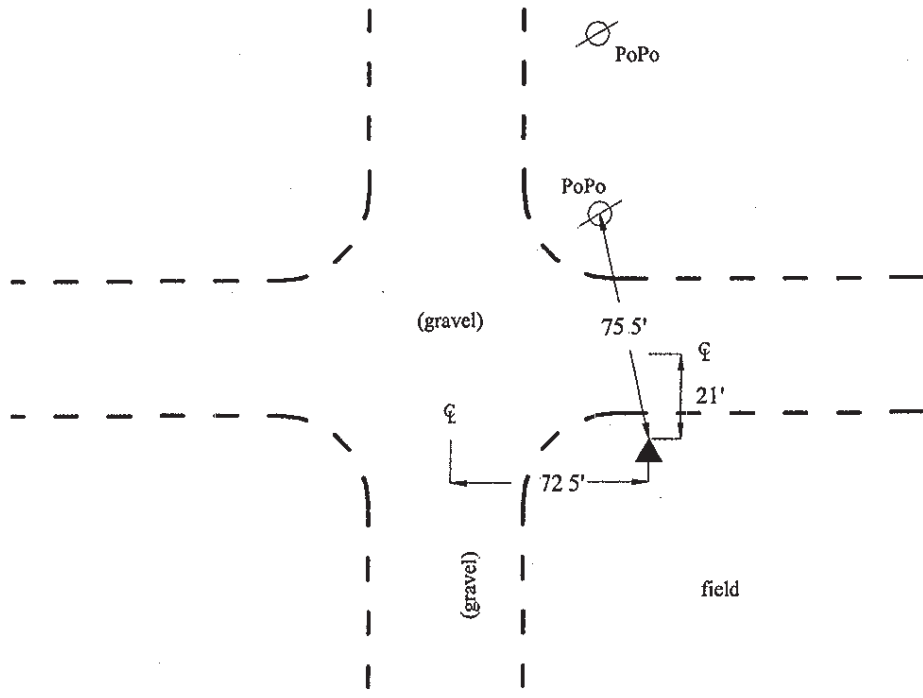
Theta: 1-35-28.01 Combination Factor: 0.99996930

Designation: **PHOTOGRAMMETRIC SURVEY MARKER**

Monument Type: 5/8" x 30" deformed rebar with a red survey cap

Remarks: 70ft E of gravel rd, 20ft S of gravel rd, in the SE 1/4 of Sec 16 T8N R6W.

Date Printed June 22, 2001



2001-082

BRS/SBS

March 16, 2001

Set 5/8" Rebar with red cap,
flush with ground

2001
Lee County, Iowa
Iowa South Zone (1402)
NAD_83(1996)

Point Number: 84

Northing: 176219.48(Ft) Easting: 2204575.60(Ft)

Northing: 53711.806(M) Easting: 671955.988(M)

Elev: 652.92(Ft) NAVD_88

Elev: 199.017(M) NAVD_88 Ellip Ht: 165.822(M) 96C Geoid Ht: -33.195(M)

Latitude: 40-27-56.254139 N Longitude: 91-28-20.488219 W

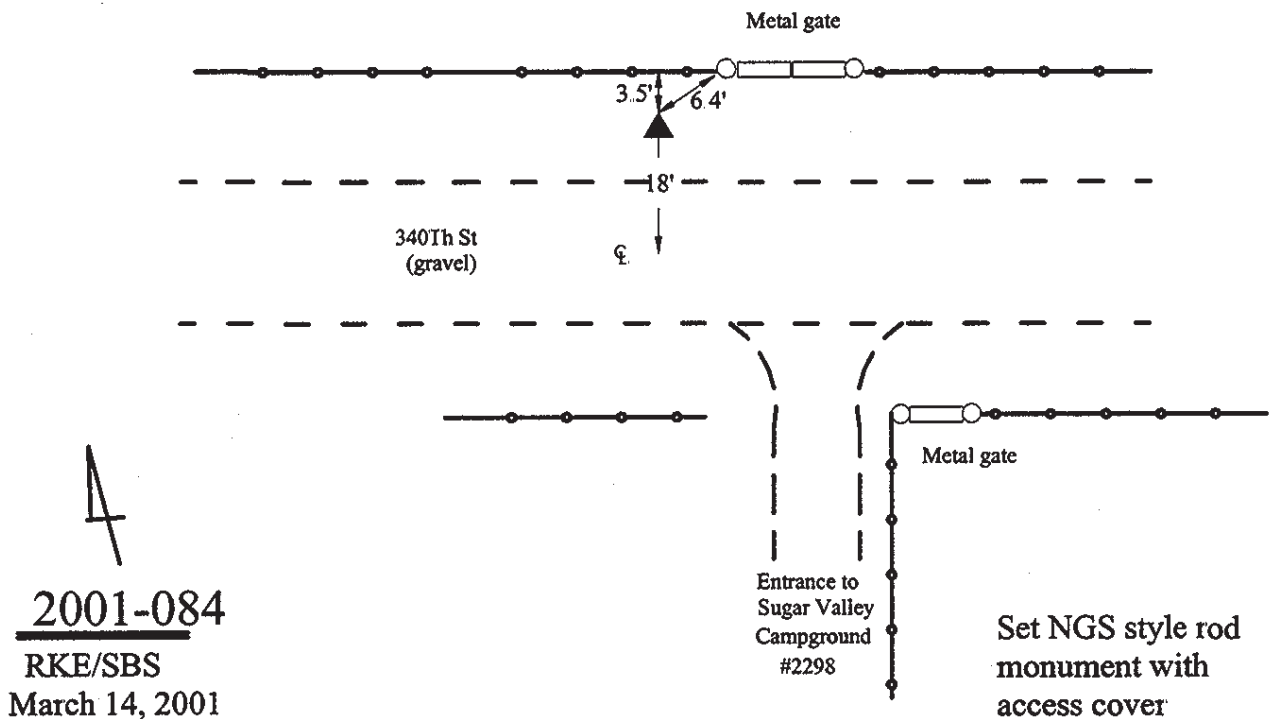
Theta: 1-20-08.20 Combination Factor: 1.00000406

Designation: LEE CO GPS CONTROL PT 2001-084

Monument Type: 5/8" dia driven aluminum rod with a 2-1/2" dia aluminum cap and permanent magnet encased in a 5" dia PVC pipe with an aluminum access cover.

Remarks: 20ft N of 340th St., on line with pvt drv #2298 to S, 5ft W of field drv to N near the NW Cor Sec 5 T65N R5W.

Date Printed June 22, 2001



2001
Lee County, Iowa
Iowa South Zone (1402)
NAD_83(1996)

Point Number: 86

Northing: 160478.14(Ft) Easting: 2207307.90(Ft)

Northing: 48913.834(M) Easting: 672788.794(M)

Elev: 587.08(Ft) NAVD_88

Elev: 178.949(M) NAVD_88 Ellip Ht: 145.787(M) 96C Geoid Ht: -33.162(M)

Latitude: 40-25-20.122002 N Longitude: 91-27-49.915359 W

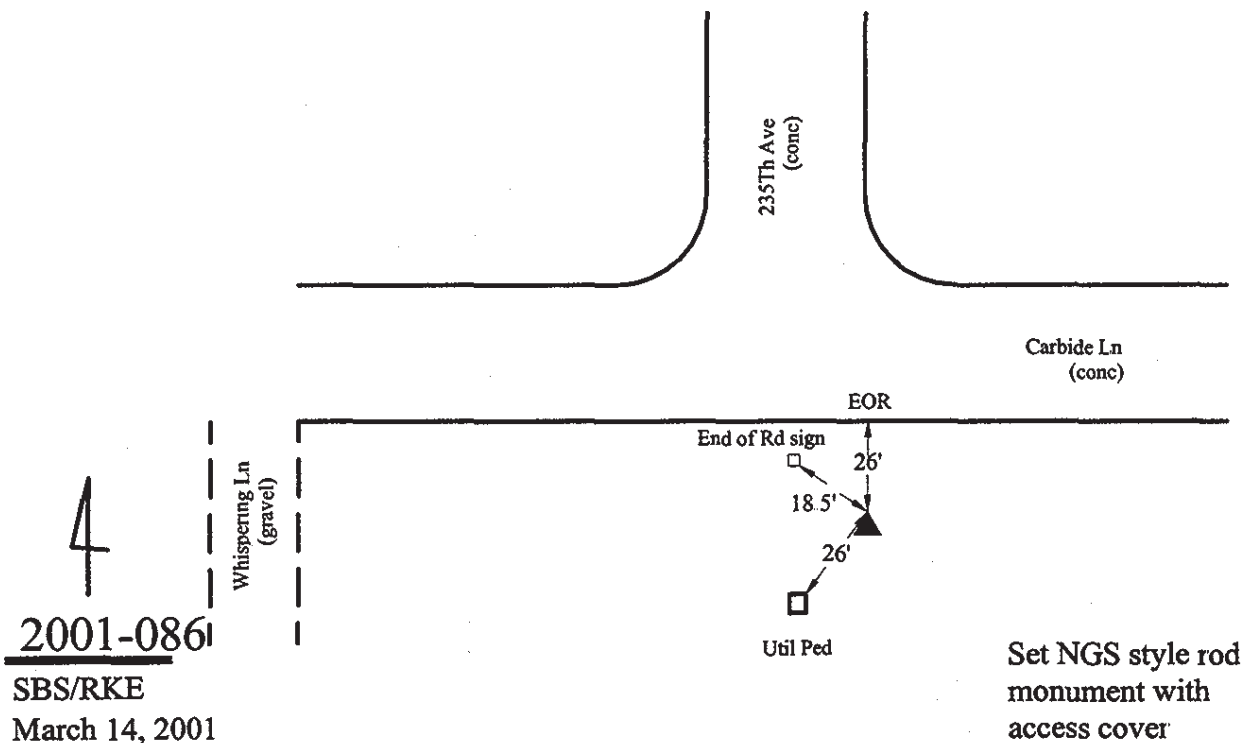
Theta: 1-20-28.33 Combination Factor: 1.00001711

Designation: LEE CO GPS CONTROL PT 2001-086

Monument Type: 5/8" dia driven aluminum rod with a 2-1/2" dia aluminum cap and permanent magnet encased in a 5" dia PVC pipe with an aluminum access cover.

Remarks: 10ft E of extended CL of 235th Ave to N, 40ft S of Carbide Ln near the N 1/4 Cor of Sec 20 T65N R5W.

Date Printed June 22, 2001



2001
Lee County, Iowa
Iowa South Zone (1402)
NAD_83(1996)

Point Number: 88

Northing: 148357.98(Ft) Easting: 2211025.67(Ft)

Northing: 45219.601(M) Easting: 673921.971(M)

Elev: 493.23(Ft) NAVD_88

Elev: 150.341(M) NAVD_88 Ellip Ht: 117.207(M) 96C Geoid Ht: -33.134(M)

Latitude: 40-23-19.530644 N Longitude: 91-27-05.551263 W

Theta: 1-20-57.56 Combination Factor: 1.00002964

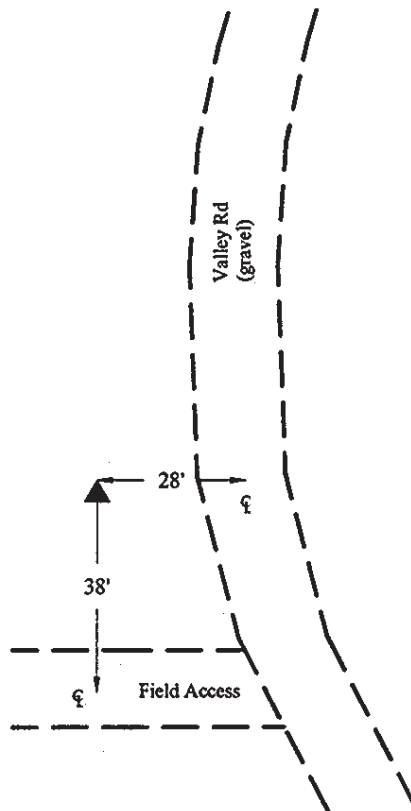
Designation: LEE CO GPS CONTROL PT 2001-088

Monument Type: 5/8" dia driven aluminum rod with a 2-1/2" dia aluminum cap and permanent magnet encased in a 5" dia PVC pipe with an aluminum access cover.

Remarks: 30ft SW of Valley Rd., 120ft NW of pvt. drv #3930, 0.25 mi SE of 390th St. in the NW 1/4 of Sec 33 T65N R5W.

Date Printed June 22, 2001

4
2001-088
RKE/SBS
March 14, 2001



Set NGS style rod
monument with
access cover

2001
Lee County, Iowa
Iowa South Zone (1402)
NAD_83(1996)

Point Number: 90

Northing: 155013.39(Ft) Easting: 2209638.22(Ft)

Northing: 47248.174(M) Easting: 673499.076(M)

Elev: 520.57(Ft) NAVD_88

Elev: 158.676(M) NAVD_88 Ellip Ht: 125.526(M) 96C Geoid Ht: -33.150(M)

Latitude: 40-24-25.598447 N Longitude: 91-27-21.454872 W

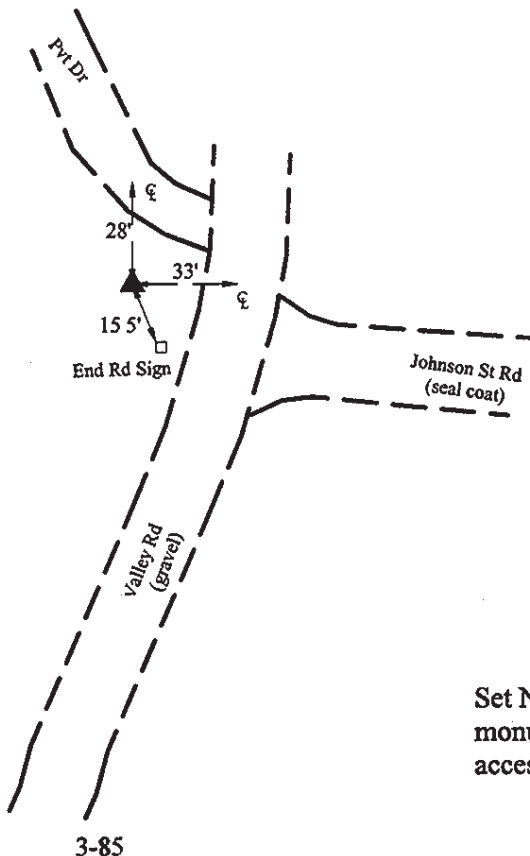
Theta: 1-20-47.08 Combination Factor: 1.00002389

Designation: LEE CO GPS CONTROL PT 2001-090

Monument Type: 5/8" dia driven aluminum rod with a 2-1/2" dia aluminum cap and permanent magnet encased in a 5" dia PVC pipe with an aluminum access cover.

Remarks: 30ft W of Valley Rd, 5ft N of extended center line of Johnson St Rd in the NE 1/4 of Sec 29 T65N R5W.

Date Printed June 22, 2001



4
2001-090
RKE/SBS
March 14, 2001

Set NGS style rod
monument with
access cover

2001
Lee County, Iowa
Iowa South Zone (1402)
NAD_83(1996)

Point Number: 92

Northing: 171501.66(Ft) Easting: 2210334.69(Ft)

Northing: 52273.810(M) Easting: 673711.359(M)

Elev: 670.04(Ft) NAVD_88

Elev: 204.233(M) NAVD_88 Ellip Ht: 171.046(M) 96C Geoid Ht: -33.187(M)

Latitude: 40-27-08.315882 N Longitude: 91-27-07.437218 W

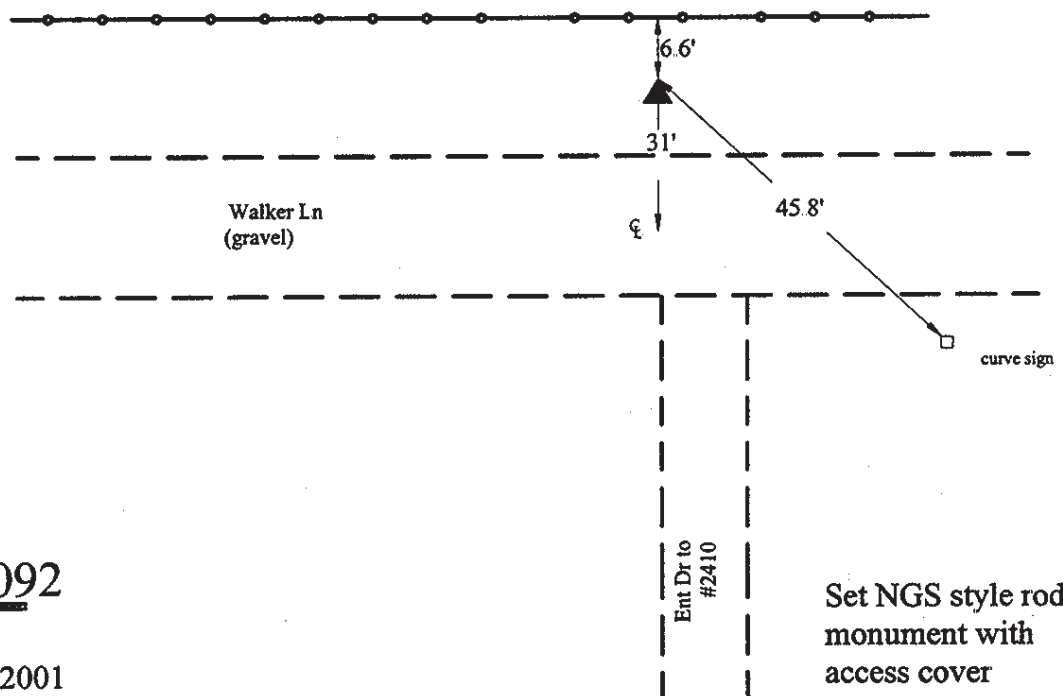
Theta: 1-20-56.31 Combination Factor: 1.00000623

Designation: LEE CO GPS CONTROL PT 2001-092

Monument Type: 5/8" dia driven aluminum rod with a 2-1/2" dia aluminum cap and permanent magnet encased in a 5" dia PVC pipe with an aluminum access cover.

Remarks: 30ft N of Walker Ln on line with entr to pvt drv #2410 to S in the SW 1/4 of Sec 4 T65N R5W.

Date Printed June 22, 2001



4
2001-092
RKE/SBS
March 14, 2001

2001
Lee County, Iowa
Iowa South Zone (1402)
NAD_83(1996)

Point Number: 94

Northing: 176331.54(Ft) Easting: 2213714.73(Ft)

Northing: 53745.961(M) Easting: 674741.598(M)

Elev: 661.04(Ft) NAVD_88

Elev: 201.491(M) NAVD_88 Ellip Ht: 168.293(M) 96C Geoid Ht: -33.198(M)

Latitude: 40-27-55.239141 N Longitude: 91-26-22.248917 W

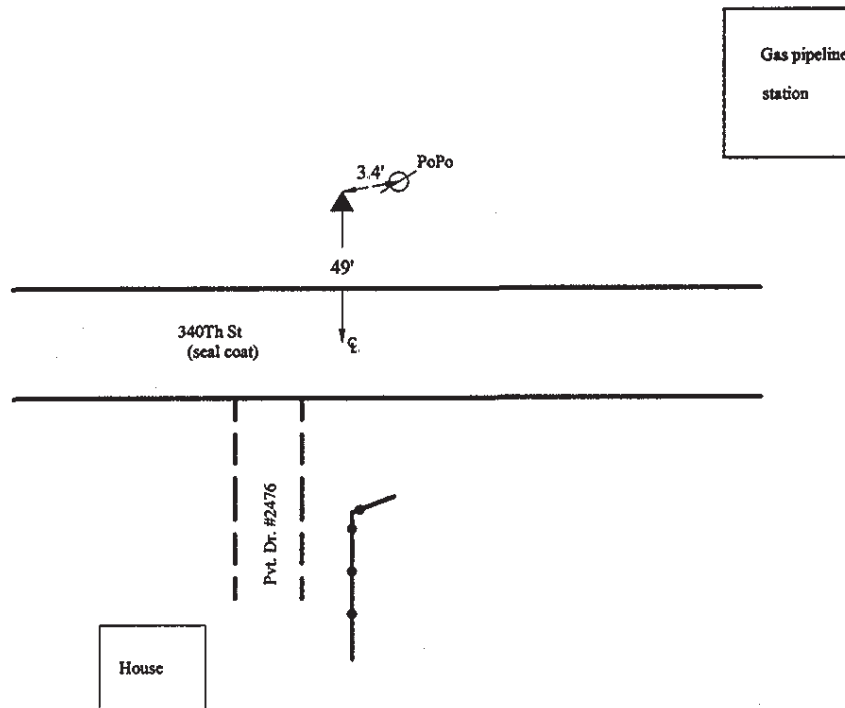
Theta: 1-21-26.08 Combination Factor: 1.00000374

Designation: LEE CO GPS CONTROL PT 2001-094

Monument Type: 5/8" dia driven aluminum rod with a 2-1/2" dia aluminum cap and permanent magnet encased in a 5" dia PVC pipe with an aluminum access cover.

Remarks: 50ft N of 340th St (J82), 10ft E of pvt drv #2476 to S in the SE 1/4 of Sec 33 T66N R5W.

Date Printed June 22, 2001



4
2001-094
RKE/SBS
March 14, 2001

Set NGS style rod
monument with
access cover