

2001
Lee County, Iowa
Iowa South Zone (1402)
NAD_83(1996)

Point Number: 130

Northing: 245222.64(Ft) Easting: 2236232.54(Ft)

Northing: 74744.010(M) Easting: 681605.042(M)

Elev: 709.68(Ft) NAVD_88

Elev: 216.312(M) NAVD_88 Ellip Ht: 183.069(M) 96C Geoid Ht: -33.243(M)

Latitude: 40-39-10.390412 N Longitude: 91-21-09.010553 W

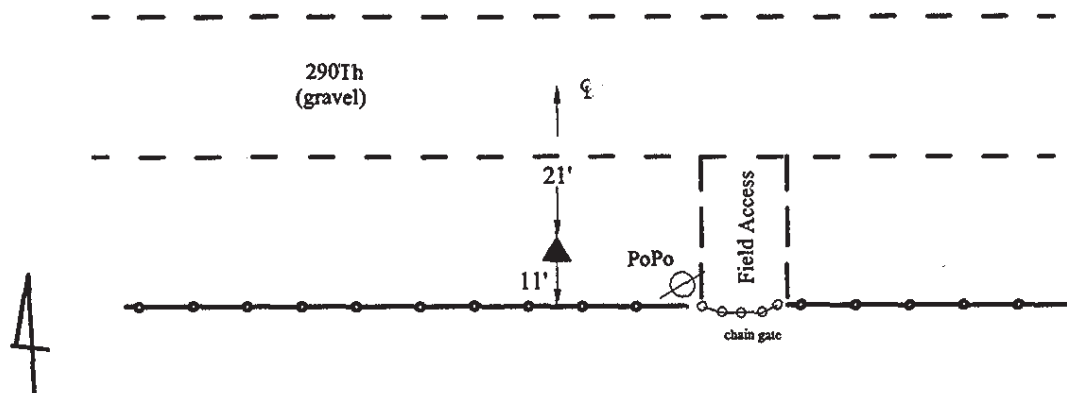
Theta: 1-24-52.41 Combination Factor: 0.99996508

Designation: LEE CO GPS CONTROL PT 2001-130

Monument Type: 5/8" dia driven aluminum rod with a 2-1/2" dia aluminum cap and permanent magnet encased in a 5" dia PVC pipe with an aluminum access cover.

Remarks: 20ft S of 290th Ave and 40ft W of field drive to south in SW cor of Sec 29 T68N R4W.

Date Printed June 22, 2001



2001-130

RKE/SBS

March 14, 2001

Set NGS style rod
monument with
access cover