

2001
Lee County, Iowa
Iowa South Zone (1402)
NAD_83(1996)

Point Number: 136

Northing: 237257.85(Ft) Easting: 2251053.83(Ft)

Northing: 72316.337(M) Easting: 686122.581(M)

Elev: 526.73(Ft) NAVD_88

Elev: 160.548(M) NAVD_88 Ellip Ht: 127.301(M) 96C Geoid Ht: -33.247(M)

Latitude: 40-37-48.052898 N Longitude: 91-17-59.391939 W

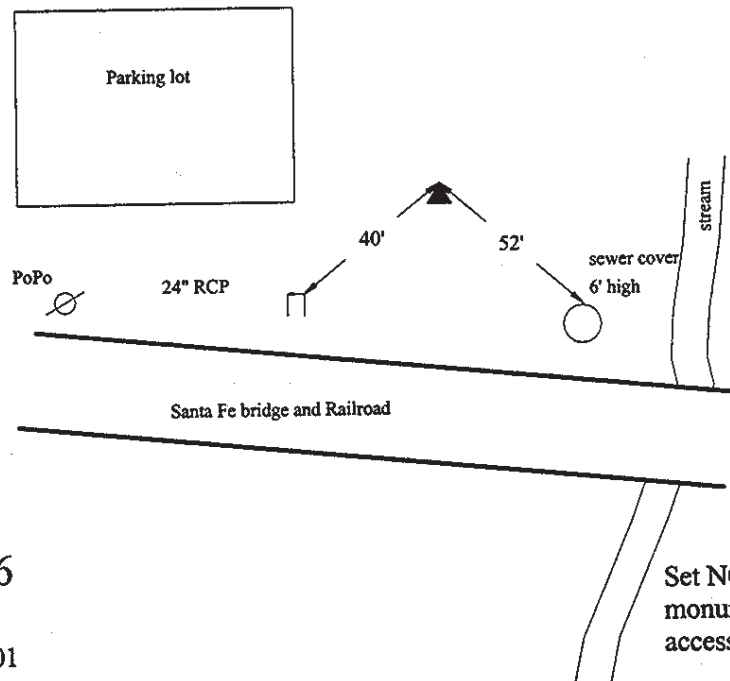
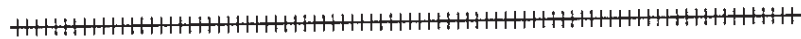
Theta: 1-26-57.31 Combination Factor: 0.99997769

Designation: LEE CO GPS CONTROL PT 2001-136

Monument Type: 5/8" dia driven aluminum rod with a 2-1/2" dia aluminum cap and permanent magnet encased in a 5" dia PVC pipe with an aluminum access cover.

Remarks: In SE corner of parking area on Fort Madison side of toll bridge, 80ft S of railroad line in the SE 1/4 of Sec 3 T67N R4W.

Date Printed June 22, 2001



4
2001-136
RKE/SBS
March 14, 2001

Set NGS style rod
monument with
access cover