

2001
Lee County, Iowa
Iowa South Zone (1402)
NAD_83(1996)

Point Number: 158

Northing: 301572.34(Ft) Easting: 2133325.02(Ft)

Northing: 91919.435(M) Easting: 650238.768(M)

Elev: 734.98(Ft) NAVD_88

Elev: 224.035(M) NAVD_88 Ellip Ht: 190.919(M) 96C Geoid Ht: -33.116(M)

Latitude: 40-48-50.015970 N Longitude: 91-43-08.905120 W

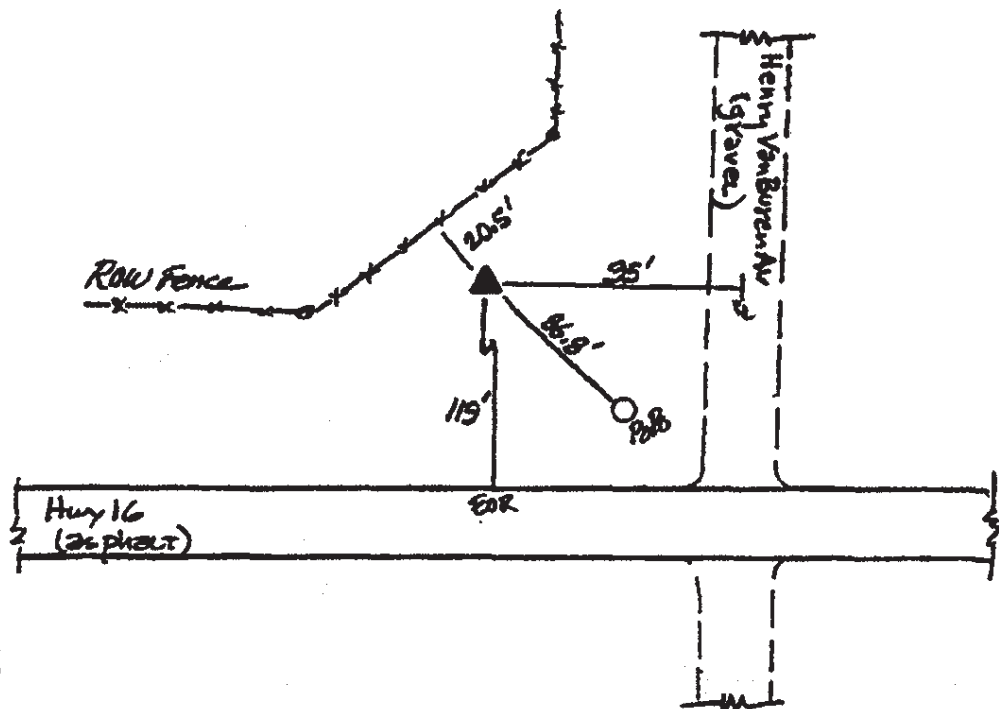
Theta: 1-10-22.99 Combination Factor: 0.99994109

Designation: VAN BUREN CO GPS CONTROL PT 2000-158

Monument Type: 5/8" dia driven aluminum rod with a 2-1/2" dia aluminum cap and permanent magnet encased in a 5" dia PVC pipe with an aluminum access cover.

Remarks: 130ft N of Hwy 16, 95ft W of Henry-Van Buren Ave near the SE Cor of Sec 36 T70N R8W

Date Printed June 22, 2001



158
BRS/MAB
APRIL 2000