

**Lee County, Iowa**

Horizontal Datum: **NAD 83(2011)** - Vertical Datum: **NAVD 1988**  
Iowa State Plane South Zone (1402)  
Iowa Regional Coordinate System Zone 14 Burlington  
US Survey Feet  
**2014**

Point Name: **9**

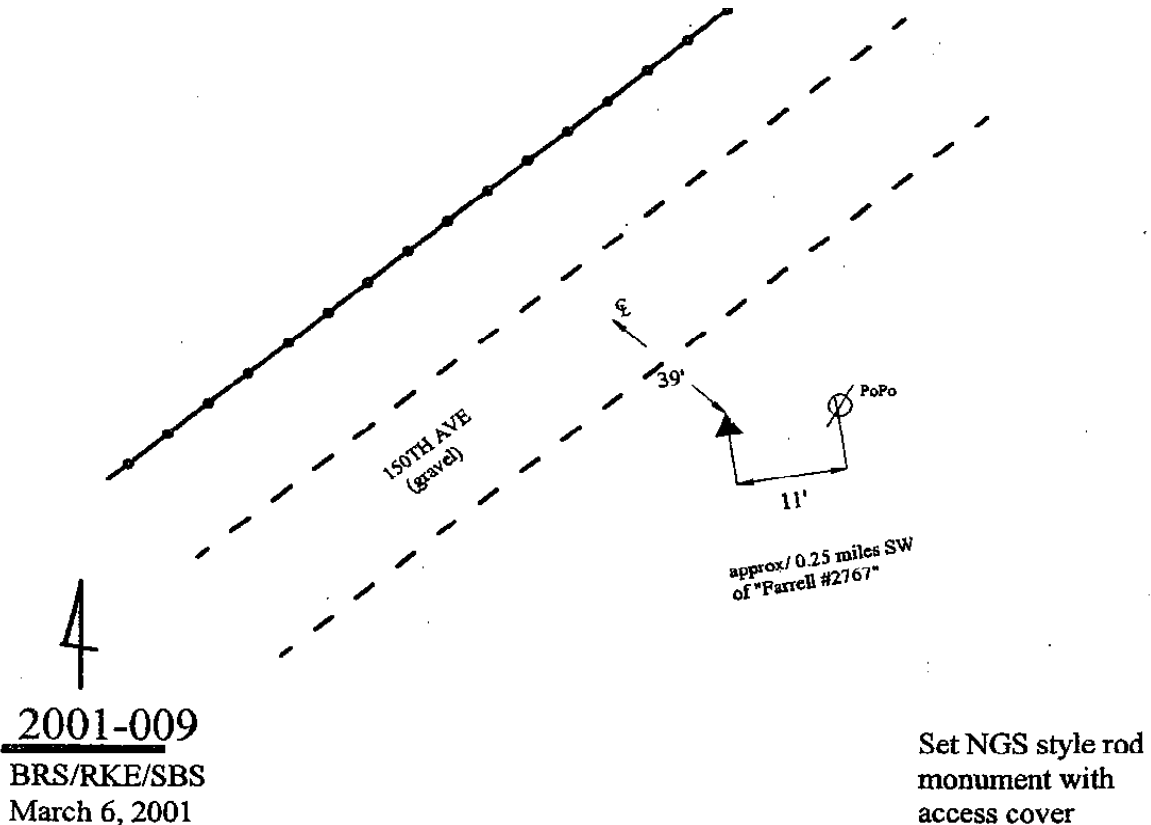
**Designation:** Lee Co. GPS Control Pt. 2001-009 (Set by ASI in 2001)

NAD 83(NA2011) Latitude: **N40°33'17.61044"** Longitude: **W91°36'49.98597"**  
NAVD 88 Ortho Height: **545.070sft** Ellip. Ht: **436.078sft** **Geoid12A**

Iowa South Zone (1402) Northing: **207847.723sft** Easting: **2164499.206sft**  
Mapping Angle: **1°14'33"** Combination Scale Factor: **0.9999906670**

IaRCS Zone 14 Northing: **6311286.370sft** Easting: **24398880.949sft**  
Mapping Angle: **-0°14'12"** Combination Scale Factor: **1.0000088776**

**Monument Type:** 5/8" dia. driven aluminum rod with a 2-1/2" dia. aluminum cap and permanent magnet encased in a 5" dia. PVC pipe with an aluminum access cover.



*This document was prepared by DCI on December 17, 2014 for use by Lee County, Iowa*