

Lee County, Iowa

Horizontal Datum: **NAD 83(2011)** - Vertical Datum: **NAVD 1988**
Iowa State Plane South Zone (1402)
Iowa Regional Coordinate System Zone 14 Burlington
US Survey Feet
2014

Point Name: **13**

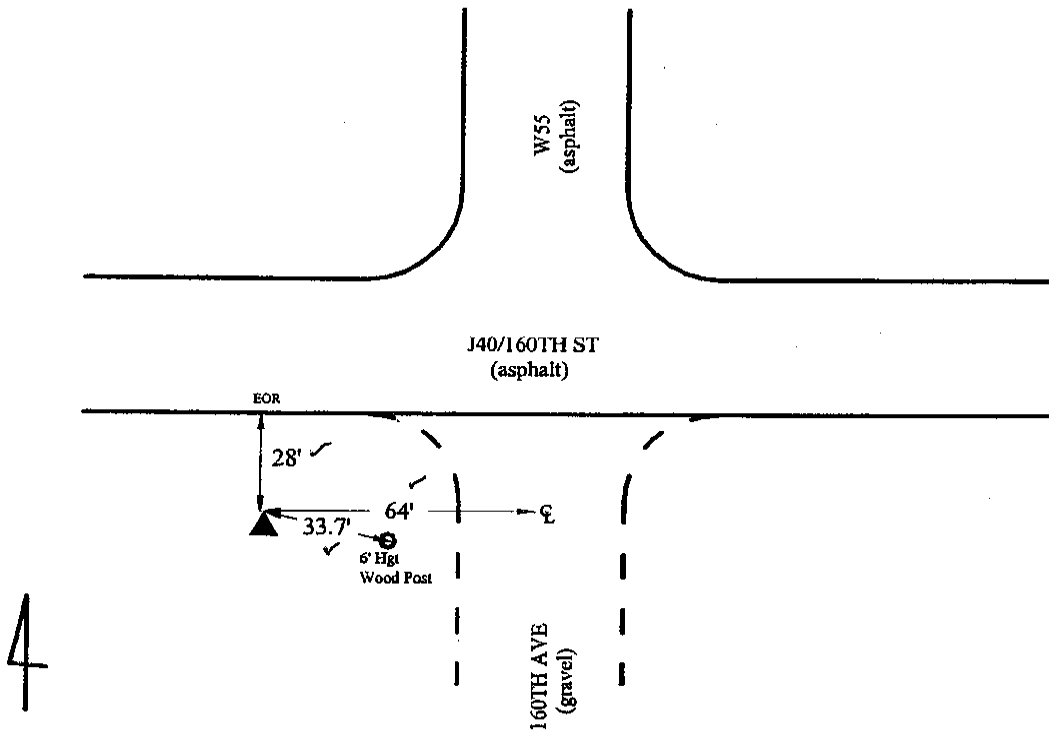
Designation: Lee Co. GPS Control Pt. 2001-013 (Set by ASI in 2001)

NAD 83(NA2011) Latitude: **N40°43'34.22346"** Longitude: **W91°36'11.31041"**
NAVD 88 Ortho Height: **714.390sft** Ellip. Ht: **605.513sft** **Geoid12A**

Iowa South Zone (1402) Northing: **270299.930sft** Easting: **2166123.170sft**
Mapping Angle: **1°14'58"** Combination Scale Factor: **0.9999535833**

IaRCS Zone 14 Northing: **6373677.895sft** Easting: **24402116.870sft**
Mapping Angle: **-0°13'49"** Combination Scale Factor: **1.0000000560**

Monument Type: 5/8" dia. driven aluminum rod with a 2-1/2" dia. aluminum cap and permanent magnet encased in a 5" dia. PVC pipe with an aluminum access cover.



2001-013
BRS/RKE/SBS
March 6, 2001

Set NGS style rod
monument with
access cover

This document was prepared by DCI on December 17, 2014 for use by Lee County, Iowa