

Lee County, Iowa
Horizontal Datum: **NAD 83(2011)** - Vertical Datum: **NAVD 1988**
Iowa State Plane South Zone (1402)
Iowa Regional Coordinate System Zone 14 Burlington
US Survey Feet
2014

Point Name: **24**

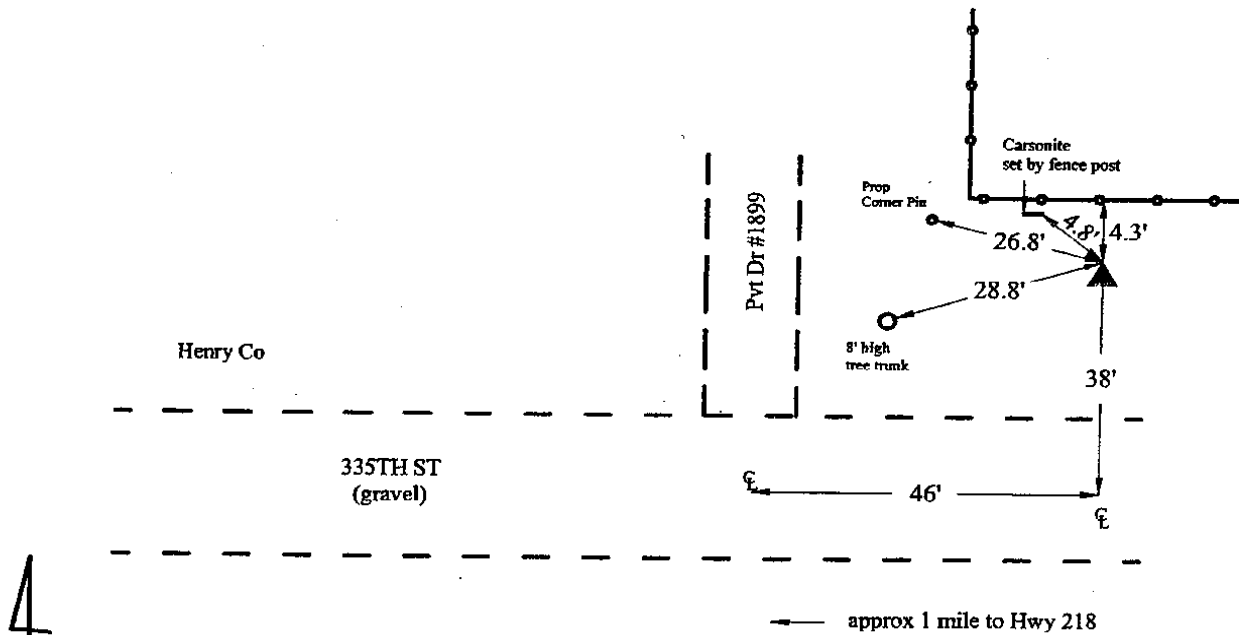
Designation: Lee Co. GPS Control Pt. 2001-024 (Set by ASI in 2001)

NAD 83(NA2011) Latitude: **N40°49'15.33626"** Longitude: **W91°32'42.15610"**
NAVD 88 Ortho Height: **689.150sft** Ellip. Ht: **580.347sft** **Geoid12A**

Iowa South Zone (1402) Northing: **305168.936sft** Easting: **2181446.435sft**
Mapping Angle: **1°17'16"** Combination Scale Factor: **0.9999425379**

IaRCS Zone 14 Northing: **6408141.191sft** Easting: **24418336.598sft**
Mapping Angle: **-0°11'34"** Combination Scale Factor: **0.9999979283**

Monument Type: 5/8" dia. driven aluminum rod with a 2-1/2" dia. aluminum cap and permanent magnet encased in a 5" dia. PVC pipe with an aluminum access cover.



4

2001-024
BRS/RKE/SBS
March 6, 2001

Set NGS style rod monument with access cover