

Lee County, Iowa

Horizontal Datum: **NAD 83(2011)** - Vertical Datum: **NAVD 1988**
Iowa State Plane South Zone (1402)
Iowa Regional Coordinate System Zone 14 Burlington
US Survey Feet
2014

Point Name: **27**

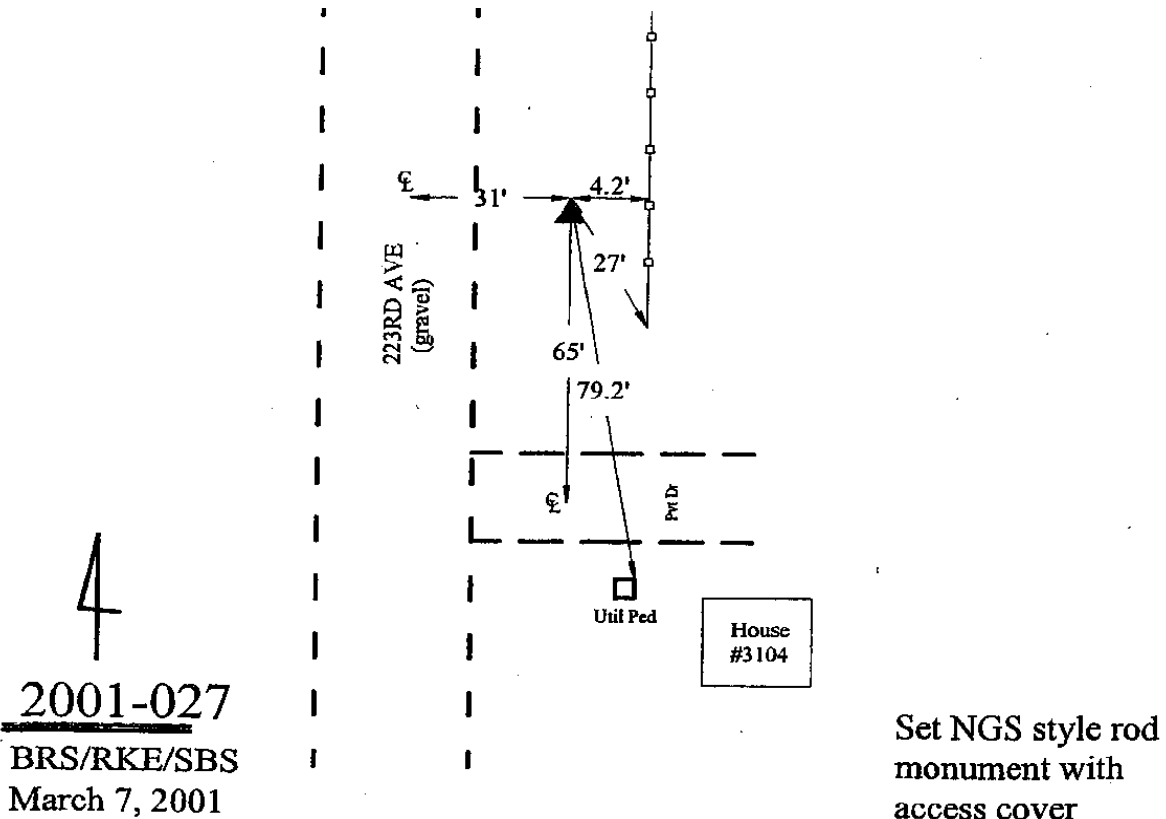
Designation: Lee Co. GPS Control Pt. 2001-027 (Set by ASI in 2001)

NAD 83(NA2011) Latitude: **N40°30'31.73664"** Longitude: **W91°28'51.01909"**
NAVD 88 Ortho Height: **686.710sft** Ellip. Ht: **577.608sft** **Geoid12A**

Iowa South Zone (1402) Northing: **191895.448sft** Easting: **2201851.151sft**
Mapping Angle: **1°19'48"** Combination Scale Factor: **0.9999932199**

IaRCS Zone 14 Northing: **6294374.872sft** Easting: **24435808.941sft**
Mapping Angle: **-0°09'00"** Combination Scale Factor: **0.9999951461**

Monument Type: 5/8" dia. driven aluminum rod with a 2-1/2" dia. aluminum cap and permanent magnet encased in a 5" dia. PVC pipe with an aluminum access cover.



This document was prepared by DCI on December 17, 2014 for use by Lee County, Iowa