

Lee County, Iowa

Horizontal Datum: **NAD 83(2011)** - Vertical Datum: **NAVD 1988**
Iowa State Plane South Zone (1402)
Iowa Regional Coordinate System Zone 14 Burlington
US Survey Feet
2014

Point Name: **29**

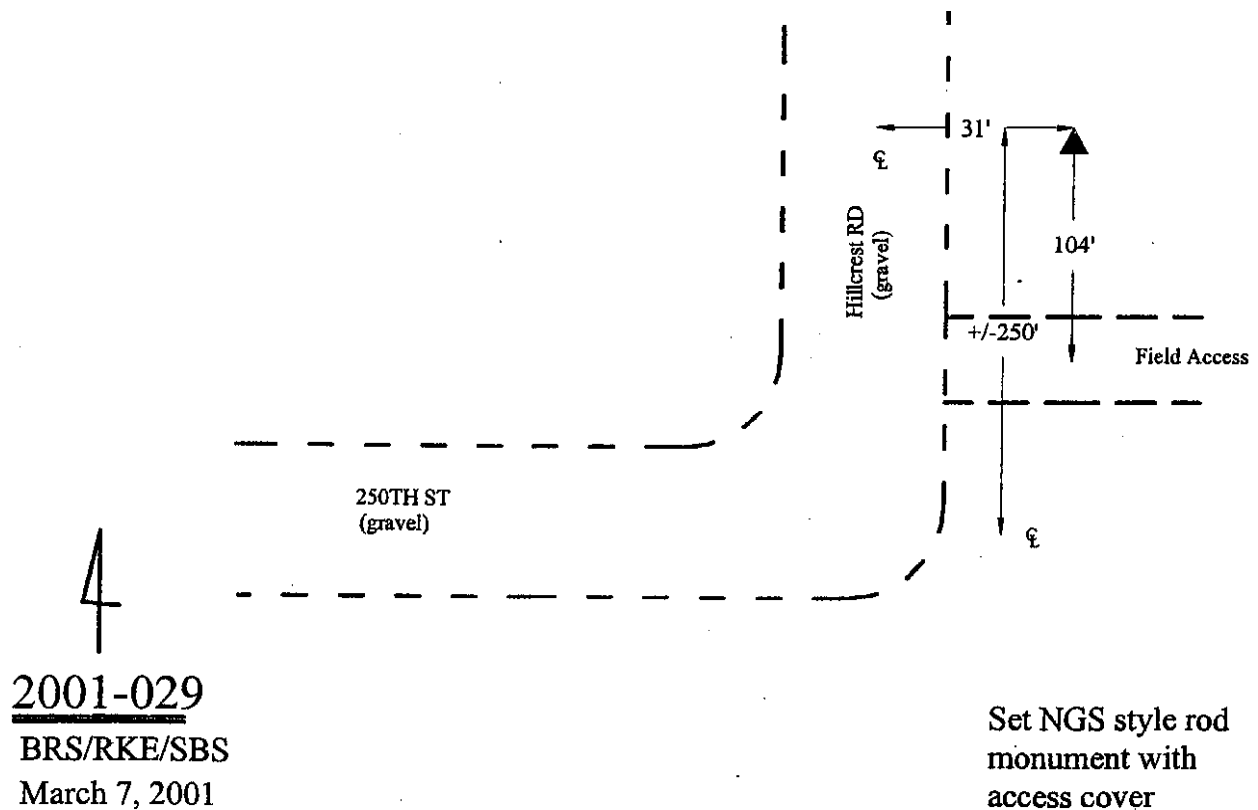
Designation: Lee Co. GPS Control Pt. 2001-029 (Set by ASI in 2001)

NAD 83(NA2011) Latitude: **N40°35'51.65984"** Longitude: **W91°30'25.92030"**
NAVD 88 Ortho Height: **687.250sft** Ellip. Ht: **578.145sft** **Geoid12A**

Iowa South Zone (1402) Northing: **224094.619sft** Easting: **2193780.862sft**
Mapping Angle: **1°18'46"** Combination Scale Factor: **0.9999758159**

IaRCS Zone 14 Northing: **6326772.108sft** Easting: **24428572.900sft**
Mapping Angle: **-0°10'03"** Combination Scale Factor: **0.9999962423**

Monument Type: 5/8" dia. driven aluminum rod with a 2-1/2" dia. aluminum cap and permanent magnet encased in a 5" dia. PVC pipe with an aluminum access cover.



2001-029
BRS/RKE/SBS
March 7, 2001

Set NGS style rod
monument with
access cover