

Lee County, Iowa

Horizontal Datum: **NAD 83(2011)** - Vertical Datum: **NAVD 1988**
Iowa State Plane South Zone (1402)
Iowa Regional Coordinate System Zone 14 Burlington
US Survey Feet
2014

Point Name: **34**

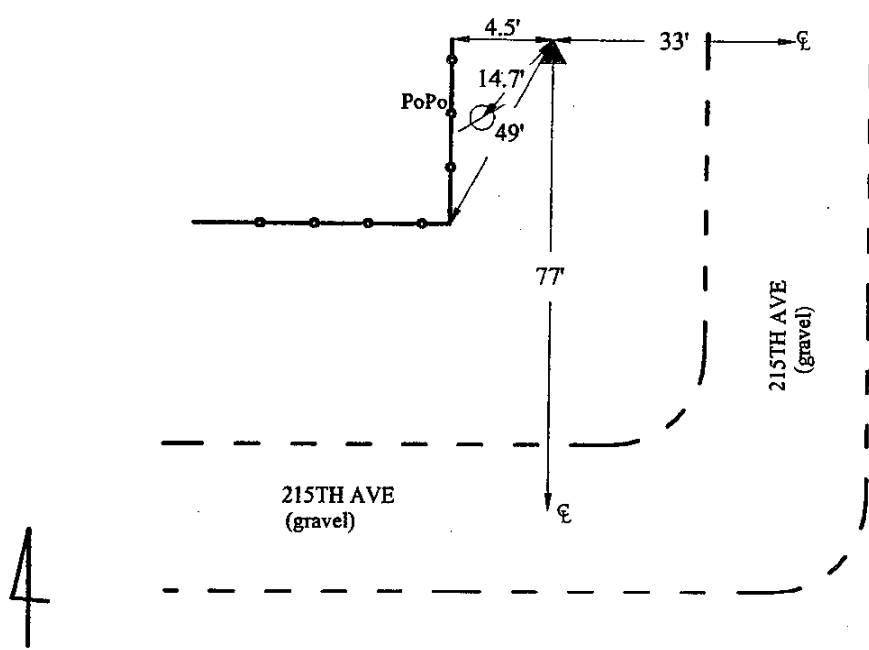
Designation: Lee Co. GPS Control Pt. 2001-034 (Set by ASI in 2001)

NAD 83(NA2011) Latitude: **N40°48'48.54603"** Longitude: **W91°29'32.48710"**
NAVD 88 Ortho Height: **711.310sft** Ellip. Ht: **602.455sft** **Geoid12A**

Iowa South Zone (1402) Northing: **302790.552sft** Easting: **2196087.135sft**
Mapping Angle: **1°19'21"** Combination Scale Factor: **0.9999423469**

IaRCS Zone 14 Northing: **6405385.129sft** Easting: **24432911.733sft**
Mapping Angle: **-0°09'30"** Combination Scale Factor: **0.9999943954**

Monument Type: 5/8" dia. driven aluminum rod with a 2-1/2" dia. aluminum cap and permanent magnet encased in a 5" dia. PVC pipe with an aluminum access cover.



2001-034
BRS/RKE/SBS
March 7, 2001

Set NGS style rod
monument with
access cover