

Lee County, Iowa

Horizontal Datum: **NAD 83(2011)** - Vertical Datum: **NAVD 1988**
Iowa State Plane South Zone (1402)
Iowa Regional Coordinate System Zone 14 Burlington
US Survey Feet
2014

Point Name: **36**

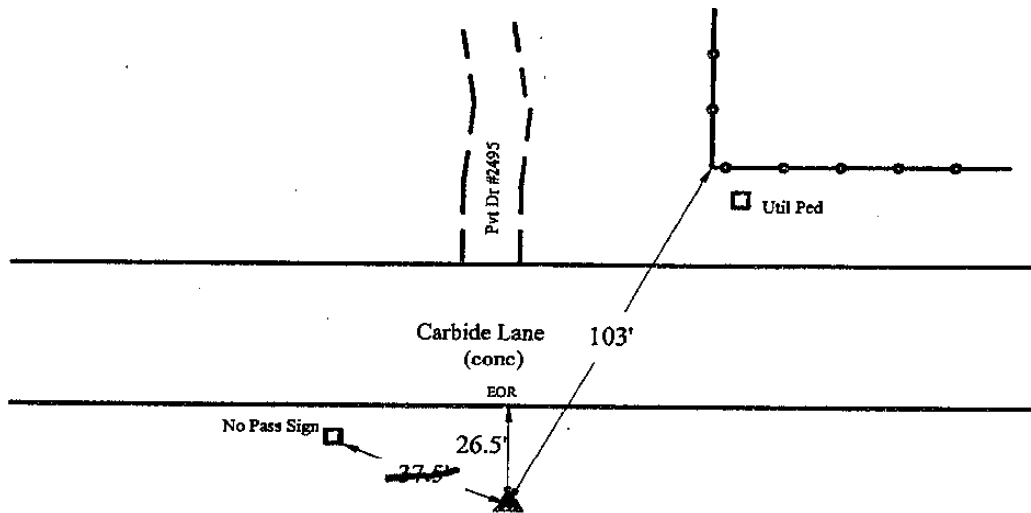
Designation: Lee Co. GPS Control Pt. 2001-036 (Set by ASI in 2001)

NAD 83(NA2011) Latitude: **N40°25'18.01637"** Longitude: **W91°26'10.23872"**
NAVD 88 Ortho Height: **593.950sft** Ellip. Ht: **485.004sft** **Geoid12A**

Iowa South Zone (1402) Northing: **160446.778sft** Easting: **2215020.275sft**
Mapping Angle: **1°21'34"** Combination Scale Factor: **1.0000169839**

IaRCS Zone 14 Northing: **6262596.817sft** Easting: **24448161.281sft**
Mapping Angle: **-0°07'15"** Combination Scale Factor: **0.9999979269**

Monument Type: 5/8" dia. driven aluminum rod with a 2-1/2" dia. aluminum cap and permanent magnet encased in a 5" dia. PVC pipe with an aluminum access cover.



4
2001-036
BRS/RKE/SBS
March 9, 2001

Set NGS style rod
monument with
access cover

This document was prepared by DCI on December 17, 2014 for use by Lee County, Iowa