

**Lee County, Iowa**

Horizontal Datum: **NAD 83(2011)** - Vertical Datum: **NAVD 1988**  
Iowa State Plane South Zone (1402)  
Iowa Regional Coordinate System Zone 14 Burlington  
US Survey Feet  
**2014**

Point Name: **38**

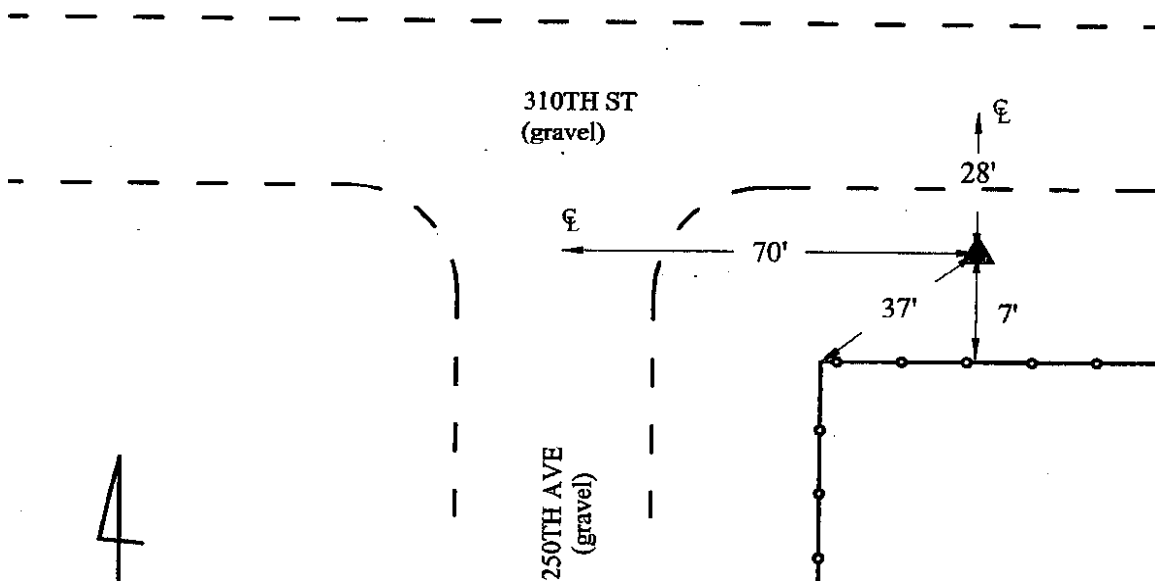
**Designation:** Lee Co. GPS Control Pt. 2001-038 (Set by ASI in 2001)

NAD 83(NA2011) Latitude: **N40°30'30.99673"** Longitude: **W91°25'59.89840"**  
NAVD 88 Ortho Height: **647.950sft** Ellip. Ht: **538.820sft** **Geoid12A**

Iowa South Zone (1402) Northing: **192131.006sft** Easting: **2215067.325sft**  
Mapping Angle: **1°21'41"** Combination Scale Factor: **0.9999951138**

IaRCS Zone 14 Northing: **6294268.961sft** Easting: **24449026.803sft**  
Mapping Angle: **-0°07'09"** Combination Scale Factor: **0.9999952571**

**Monument Type:** 5/8" dia. driven aluminum rod with a 2-1/2" dia. aluminum cap and permanent magnet encased in a 5" dia. PVC pipe with an aluminum access cover.



**2001-038**

**BRS/RKE/SBS**

**March 9, 2001**

Set NGS style rod  
monument with  
access cover