

Lee County, Iowa

Horizontal Datum: **NAD 83(2011)** - Vertical Datum: **NAVD 1988**
Iowa State Plane South Zone (1402)
Iowa Regional Coordinate System Zone 14 Burlington
US Survey Feet
2014

Point Name: **40**

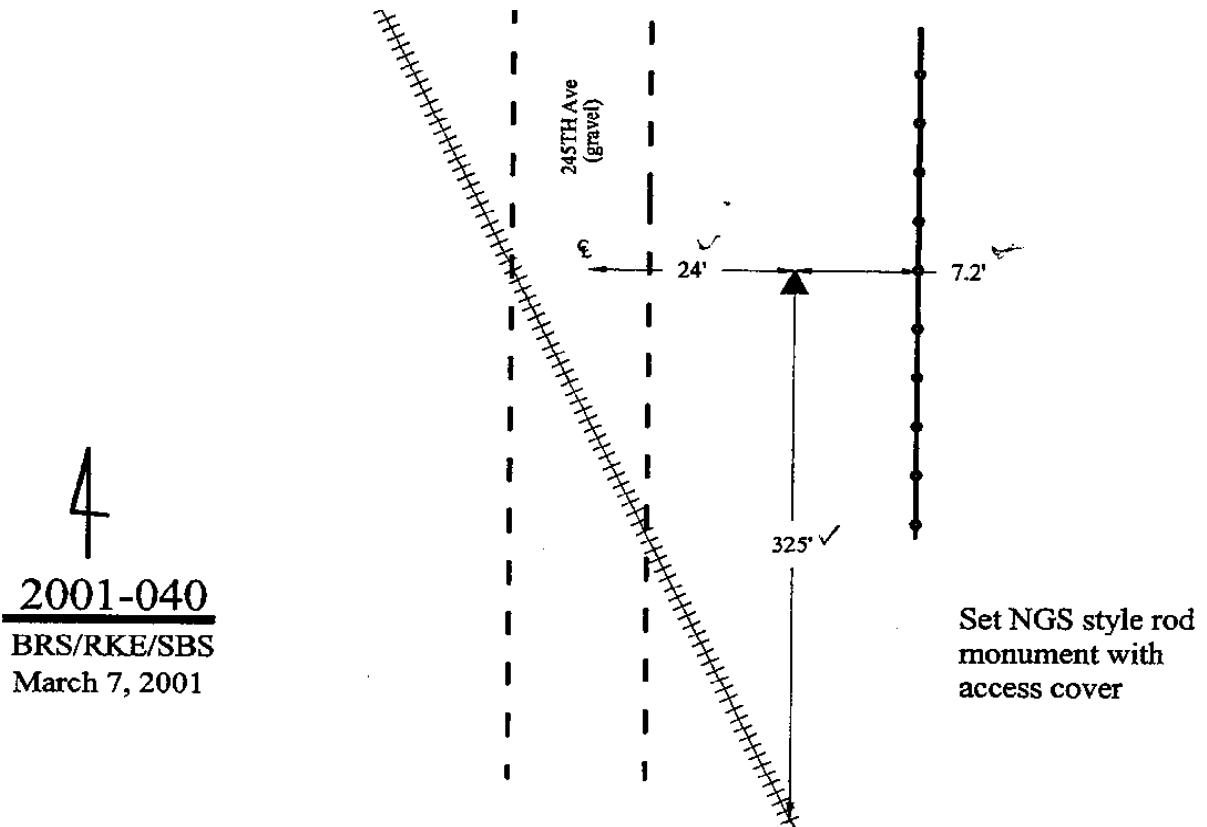
Designation: Lee Co. GPS Control Pt. 2001-040 (Set by ASI in 2001)

NAD 83(NA2011) Latitude: **N40°35'47.22649"** Longitude: **W91°26'25.91240"**
NAVD 88 Ortho Height: **556.890sft** Ellip. Ht: **447.711sft** **Geoid12A**

Iowa South Zone (1402) Northing: **224077.307sft** Easting: **2212300.807sft**
Mapping Angle: **1°21'24"** Combination Scale Factor: **0.9999822646**

laRCS Zone 14 Northing: **6326276.365sft** Easting: **24447086.568sft**
Mapping Angle: **-0°07'26"** Combination Scale Factor: **0.9999998353**

Monument Type: 5/8" dia. driven aluminum rod with a 2-1/2" dia. aluminum cap and permanent magnet encased in a 5" dia. PVC pipe with an aluminum access cover.



4
2001-040
BRS/RKE/SBS
March 7, 2001