

Lee County, Iowa

Horizontal Datum: **NAD 83(2011)** - Vertical Datum: **NAVD 1988**
Iowa State Plane South Zone (1402)
Iowa Regional Coordinate System Zone 14 Burlington
US Survey Feet
2014

Point Name: **58**

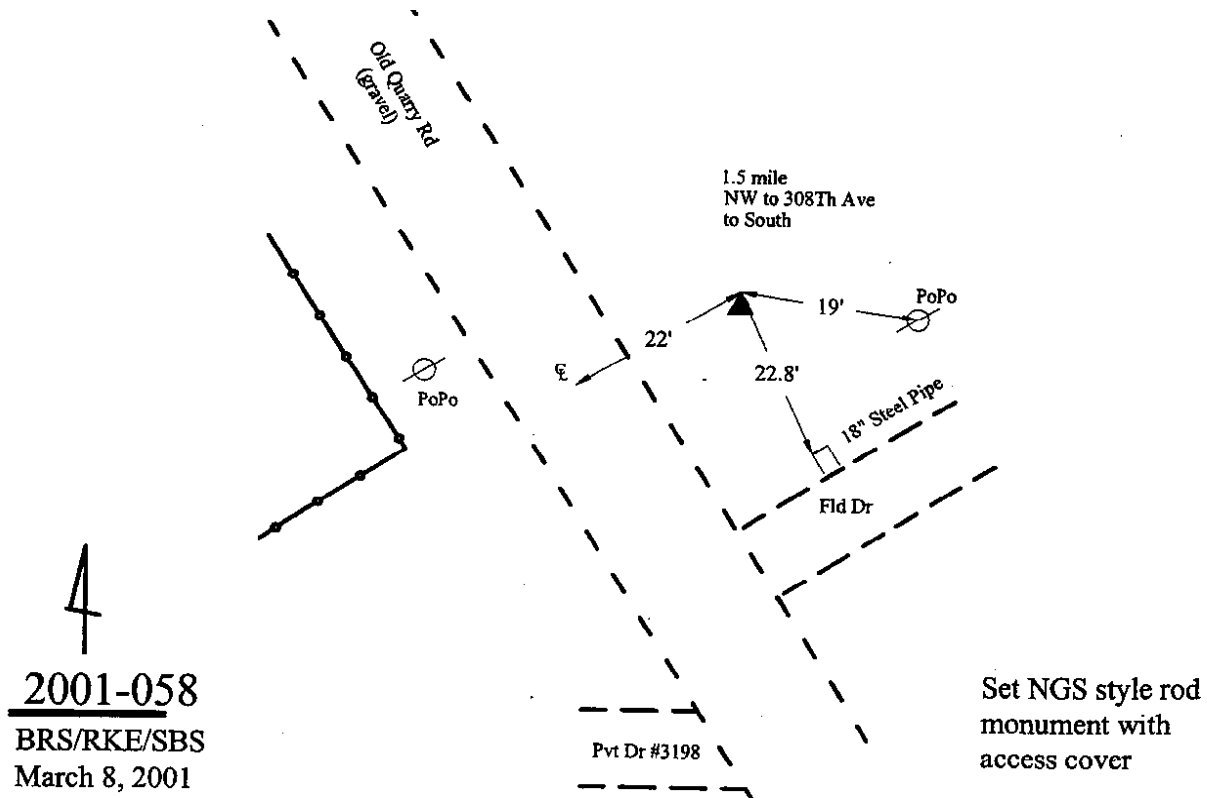
Designation: Lee Co. GPS Control Pt. 2001-058 (Set by ASI in 2001)

NAD 83(NA2011) Latitude: **N40°46'01.19601"** Longitude: **W91°17'40.09396"**
NAVD 88 Ortho Height: **564.430sft** Ellip. Ht: **455.380sft** **Geoid12A**

Iowa South Zone (1402) Northing: **287186.313sft** Easting: **2251275.992sft**
Mapping Angle: **1°27'10"** Combination Scale Factor: **0.9999551389**

IaRCS Zone 14 Northing: **6388358.638sft** Easting: **24487681.291sft**
Mapping Angle: **-0°01'45"** Combination Scale Factor: **0.9999964427**

Monument Type: 5/8" dia. driven aluminum rod with a 2-1/2" dia. aluminum cap and permanent magnet encased in a 5" dia. PVC pipe with an aluminum access cover.



This document was prepared by DCI on December 17, 2014 for use by Lee County, Iowa