

Lee County, Iowa

Horizontal Datum: **NAD 83(2011)** - Vertical Datum: **NAVD 1988**
Iowa State Plane South Zone (1402)
Iowa Regional Coordinate System Zone 14 Burlington
US Survey Feet
2014

Point Name: **85**

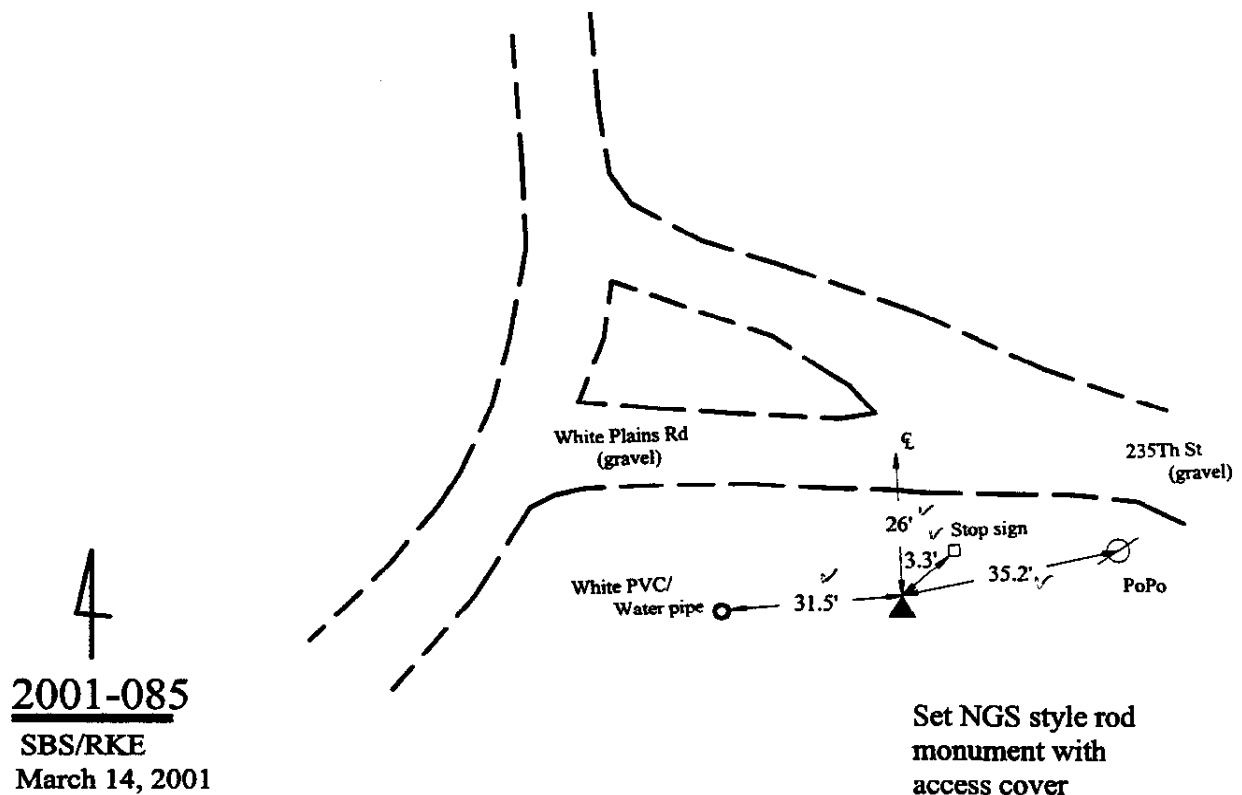
Designation: Lee Co. GPS Control Pt. 2001-085 (Set by ASI in 2001)

NAD 83(NA2011) Latitude: **N40°28'40.75064"** Longitude: **W91°28'01.09728"**
NAVD 88 Ortho Height: **671.620sft** Ellip. Ht: **562.553sft** **Geoid12A**

Iowa South Zone (1402) Northing: **180756.359sft** Easting: **2205968.761sft**
Mapping Angle: **1°20'21"** Combination Scale Factor: **1.0000005215**

IaRCS Zone 14 Northing: **6283133.169sft** Easting: **24439637.474sft**
Mapping Angle: **-0°08'27"** Combination Scale Factor: **0.9999953195**

Monument Type: 5/8" dia. driven aluminum rod with a 2-1/2" dia. aluminum cap and permanent magnet encased in a 5" dia. PVC pipe with an aluminum access cover.



This document was prepared by DCI on December 17, 2014 for use by Lee County, Iowa