

Lee County, Iowa

Horizontal Datum: **NAD 83(2011)** - Vertical Datum: **NAVD 1988**
Iowa State Plane South Zone (1402)
Iowa Regional Coordinate System Zone 14 Burlington
US Survey Feet
2014

Point Name: **95**

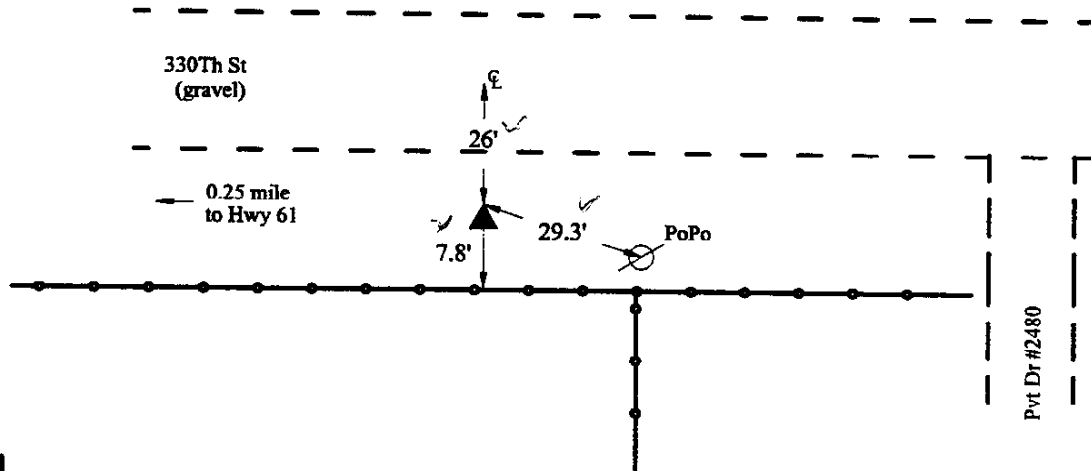
Designation: Lee Co. GPS Control Pt. 2001-095 (Set by ASI in 2001)

NAD 83(NA2011) Latitude: **N40°28'46.77520"** Longitude: **W91°26'20.35942"**
NAVD 88 Ortho Height: **655.820sft** Ellip. Ht: **546.739sft** **Geoid12A**

Iowa South Zone (1402) Northing: **181549.076sft** Easting: **2213737.165sft**
Mapping Angle: **1°21'27"** Combination Scale Factor: **1.0000009115**

IaRCS Zone 14 Northing: **6283724.956sft** Easting: **24447423.719sft**
Mapping Angle: **-0°07'22"** Combination Scale Factor: **0.9999950690**

Monument Type: 5/8" dia. driven aluminum rod with a 2-1/2" dia. aluminum cap and permanent magnet encased in a 5" dia. PVC pipe with an aluminum access cover.



2001-095
RKE/SBS
March 14, 2001

Set NGS style rod
monument with
access cover