

**Lee County, Iowa**

Horizontal Datum: **NAD 83(2011)** - Vertical Datum: **NAVD 1988**  
Iowa State Plane South Zone (1402)  
Iowa Regional Coordinate System Zone 14 Burlington  
US Survey Feet  
**2014**

Point Name: **107 (Destroyed)**

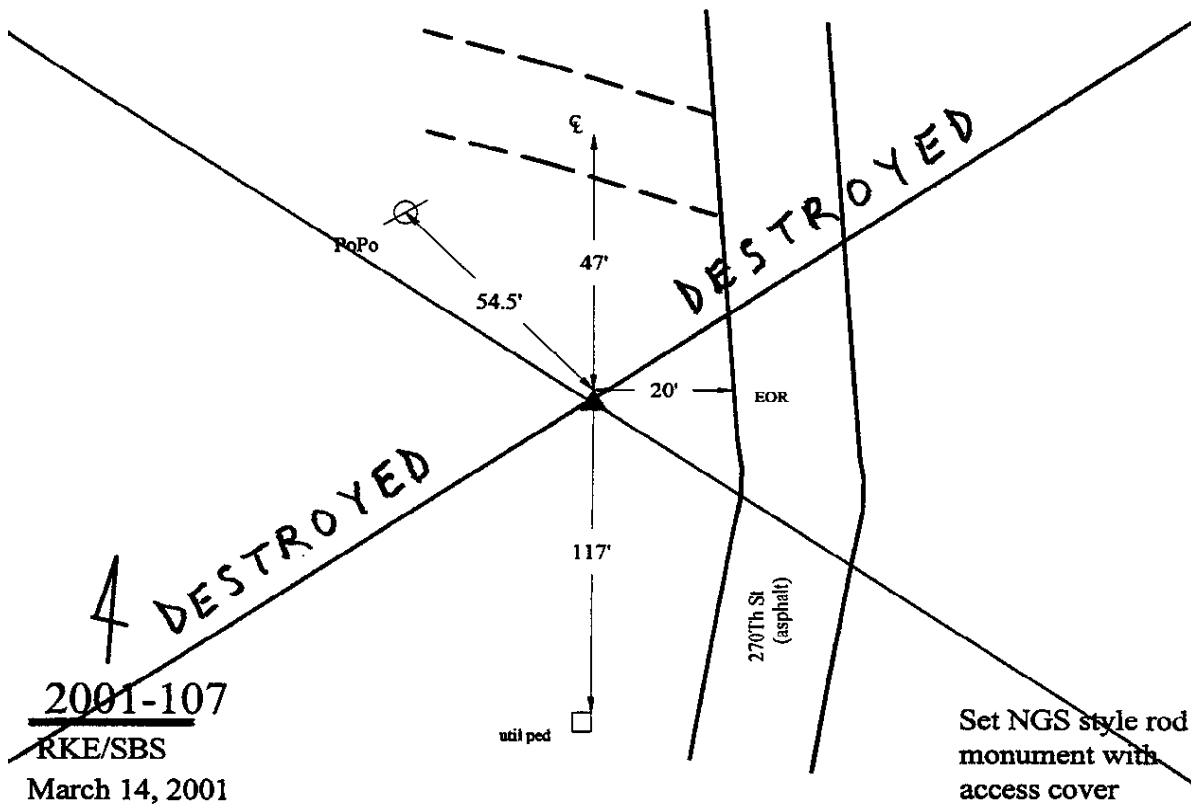
**Designation:** Lee Co. GPS Control Pt. 2001-107 (Set by ASI in 2001)

NAD 83(NA2011) Latitude: ~~**N40°27'17.261648"**~~ Longitude: ~~**W91°24'01.424033"**~~  
NAVD 88 Ortho Height: ~~**663.53sft**~~ Ellip. Ht: ~~**554.62sft**~~ **Geoid96C**

Iowa South Zone (1402) Northing: ~~**172749.54sft**~~ Easting: ~~**2224689.37sft**~~  
Mapping Angle: ~~**1°22'59"**~~ Combination Scale Factor: ~~**1.00000598**~~

IaRCS Zone 14 Northing: ~~**N/Asft**~~ Easting: ~~**N/Asft**~~  
Mapping Angle: ~~**N/A**~~ Combination Scale Factor: ~~**N/A**~~

**Monument Type:** ~~5/8" dia. driven aluminum rod with a 2-1/2" dia. aluminum cap and permanent magnet encased in a 5" dia. PVC pipe with an aluminum access cover.~~



*This document was prepared by DCI on December 17, 2014 for use by Lee County, Iowa*