

**Lee County, Iowa**

Horizontal Datum: **NAD 83(2011)** - Vertical Datum: **NAVD 1988**  
Iowa State Plane South Zone (1402)  
Iowa Regional Coordinate System Zone 14 Burlington  
US Survey Feet  
**2014**

Point Name: **131**

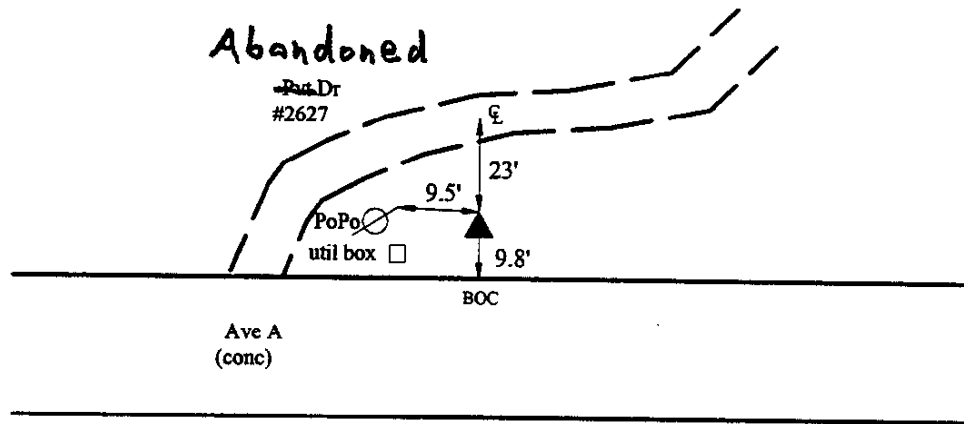
**Designation:** Lee Co. GPS Control Pt. 2001-131 (Set by ASI in 2001)

NAD 83(NA2011) Latitude: **N40°38'15.26735"** Longitude: **W91°20'37.34068"**  
NAVD 88 Ortho Height: **582.110sft** Ellip. Ht: **472.939sft** **Geoid12A**

Iowa South Zone (1402) Northing: **239706.205sft** Easting: **2238811.070sft**  
Mapping Angle: **1°25'13"** Combination Scale Factor: **0.9999738074**

laRCS Zone 14 Northing: **6341215.179sft** Easting: **24473992.440sft**  
Mapping Angle: **-0°03'40"** Combination Scale Factor: **0.9999962044**

**Monument Type:** 5/8" dia. driven aluminum rod with a 2-1/2" dia. aluminum cap and permanent magnet encased in a 5" dia. PVC pipe with an aluminum access cover.



Holy Trinity  
~~Academy~~ High School

**2001-131**  
RKE/SBS  
March 14, 2001

Set NGS style rod  
monument with  
access cover

*This document was prepared by DCI on December 17, 2014 for use by Lee County, Iowa*