

Lee County, Iowa

Horizontal Datum: **NAD 83(2011)** - Vertical Datum: **NAVD 1988**
Iowa State Plane South Zone (1402)
Iowa Regional Coordinate System Zone 14 Burlington
US Survey Feet
2014

Point Name: **135**

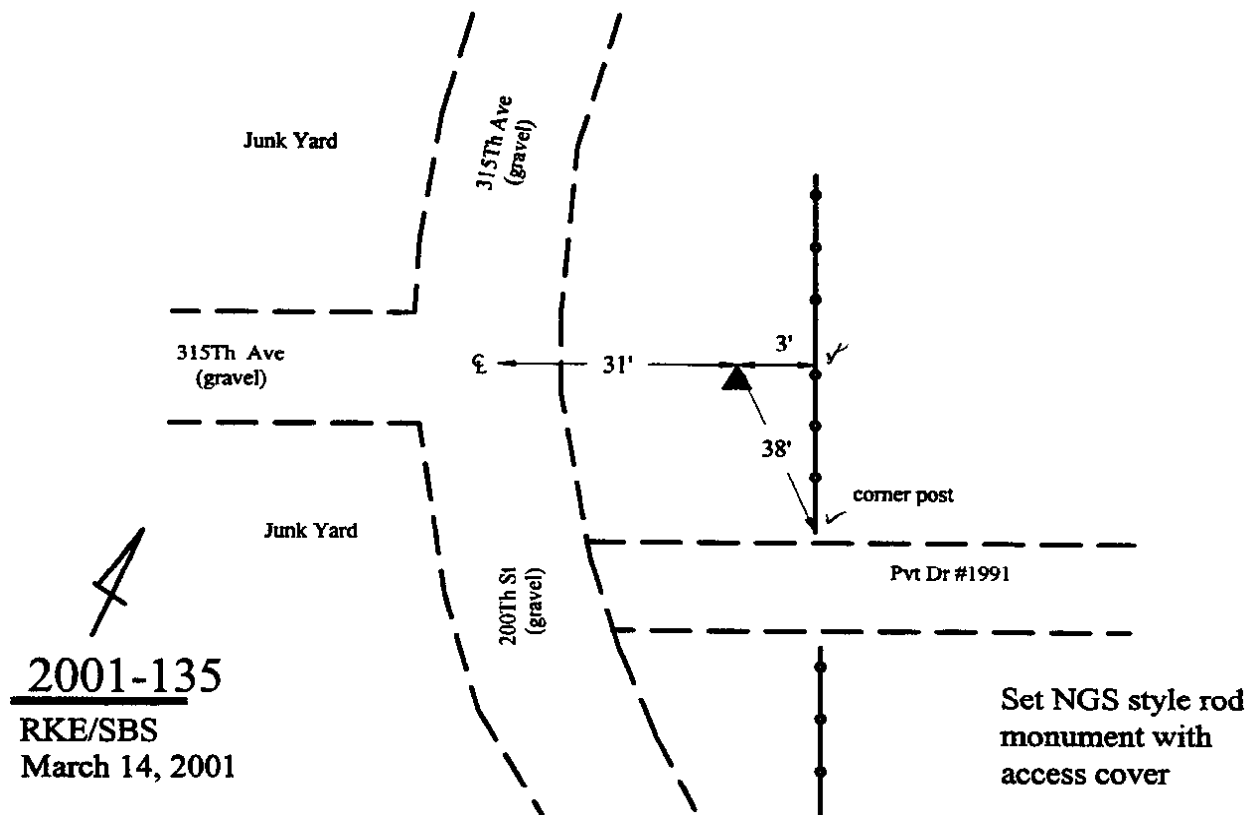
Designation: Lee Co. GPS Control Pt. 2001-135 (Set by ASI in 2001)

NAD 83(NA2011) Latitude: **N40°40'05.19552"** Longitude: **W91°18'57.58476"**
NAVD 88 Ortho Height: **648.680sft** Ellip. Ht: **539.530sft** **Geoid12A**

Iowa South Zone (1402) Northing: **251019.439sft** Easting: **2246219.976sft**
Mapping Angle: **1°26'19"** Combination Scale Factor: **0.9999655730**

IaRCS Zone 14 Northing: **6352333.356sft** Easting: **24481691.554sft**
Mapping Angle: **-0°02'35"** Combination Scale Factor: **0.9999926368**

Monument Type: 5/8" dia. driven aluminum rod with a 2-1/2" dia. aluminum cap and permanent magnet encased in a 5" dia. PVC pipe with an aluminum access cover.



This document was prepared by DCI on December 17, 2014 for use by Lee County, Iowa