

Lee County, Iowa
 Horizontal Datum: **NAD 83(2011)** - Vertical Datum: **NAVD 1988**
 Iowa State Plane South Zone (1402)
 Iowa Regional Coordinate System Zone 14 Burlington
 US Survey Feet
2014

Point Name: **141**

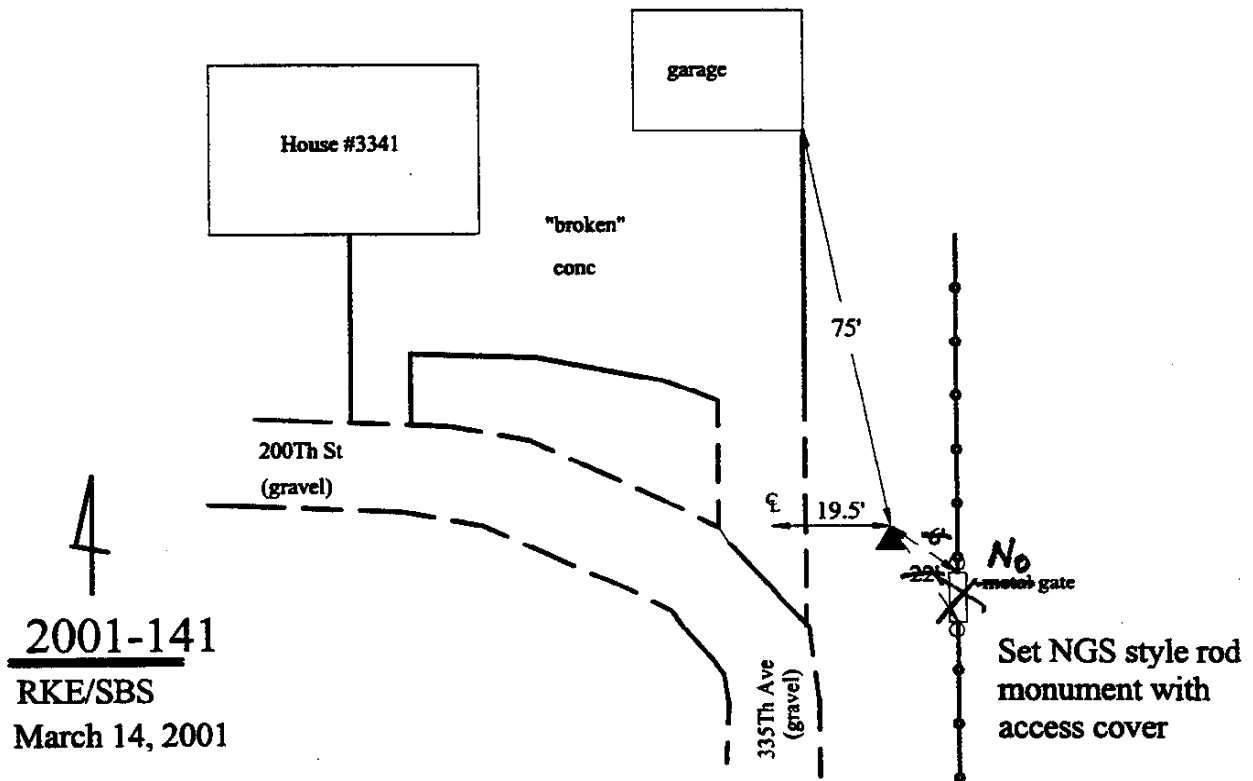
Designation: Lee Co. GPS Control Pt. 2001-141 (Set by ASI in 2001)

NAD 83(NA2011) Latitude: **N40°39'57.54217"** Longitude: **W91°16'56.27445"**
 NAVD 88 Ortho Height: **669.040sft** Ellip. Ht: **559.861sft** **Geoid12A**

Iowa South Zone (1402) Northing: **250481.661sft** Easting: **2255584.735sft**
 Mapping Angle: **1°27'39"** Combination Scale Factor: **0.9999649458**

IaRCS Zone 14 Northing: **6351553.580sft** Easting: **24491039.526sft**
 Mapping Angle: **-0°01'16"** Combination Scale Factor: **0.9999913752**

Monument Type: 5/8" dia. driven aluminum rod with a 2-1/2" dia. aluminum cap and permanent magnet encased in a 5" dia. PVC pipe with an aluminum access cover.



This document was prepared by DCI on December 17, 2014 for use by Lee County, Iowa