

**Lee County, Iowa**

Horizontal Datum: **NAD 83(2011)** - Vertical Datum: **NAVD 1988**  
Iowa State Plane South Zone (1402)  
Iowa Regional Coordinate System Zone 14 Burlington  
US Survey Feet  
**2014**

Point Name: **155**

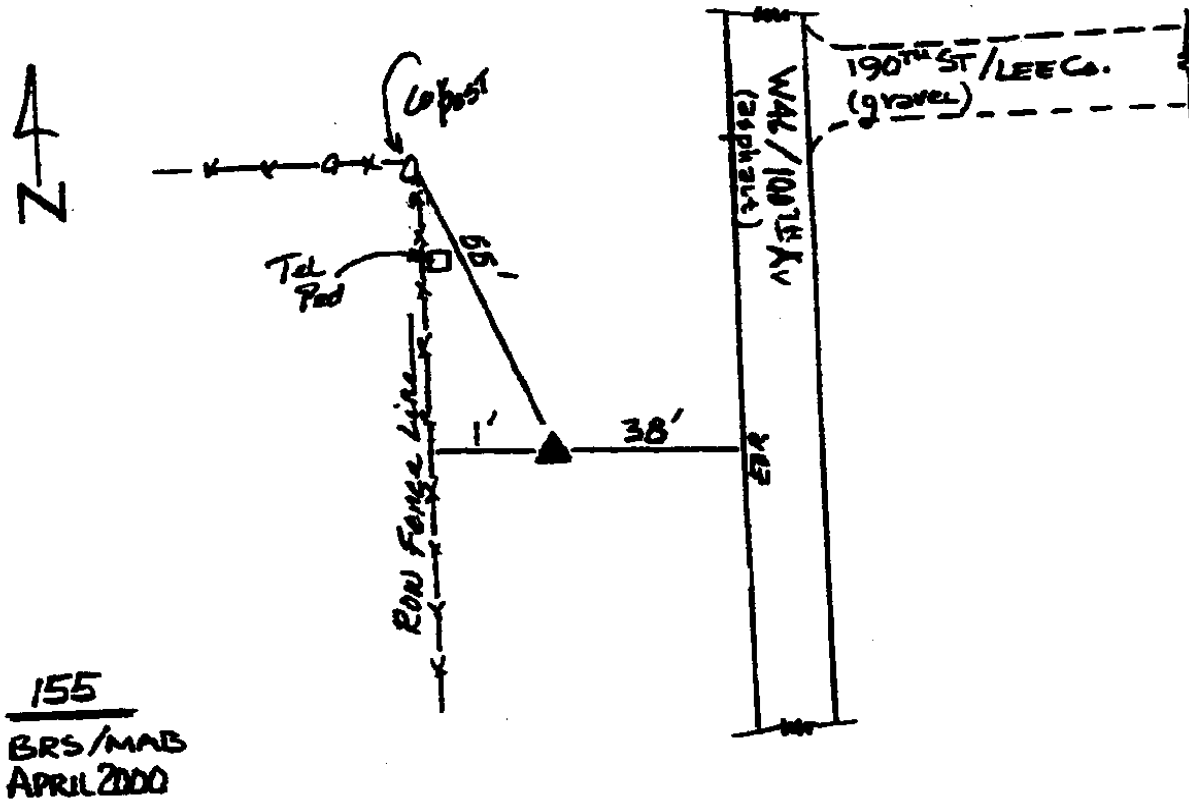
**Designation:** Van Buren Co. GPS Control Pt. 2000-155 (Set by ASI in 2000)

NAD 83(NA2011) Latitude: **N40°40'55.50289"** Longitude: **W91°43'07.36309"**  
NAVD 88 Ortho Height: **702.810sft** Ellip. Ht: **593.983sft** **Geoid12A**

Iowa South Zone (1402) Northing: **253563.332sft** Easting: **2134426.907sft**  
Mapping Angle: **1°10'24"** Combination Scale Factor: **0.9999607540**

IaRCS Zone 14 Northing: **6357764.435sft** Easting: **24369997.564sft**  
Mapping Angle: **-0°18'20"** Combination Scale Factor: **1.0000089725**

**Monument Type:** 5/8" dia. driven aluminum rod with a 2-1/2" dia. aluminum cap and permanent magnet encased in a 5" dia. PVC pipe with an aluminum access cover.



*This document was prepared by DCI on December 17, 2014 for use by Lee County, Iowa*