

Lee County, Iowa

Horizontal Datum: **NAD 83(2011)** - Vertical Datum: **NAVD 1988**
Iowa State Plane South Zone (1402)
Iowa Regional Coordinate System Zone 14 Burlington
US Survey Feet
2014

Point Name: **157**

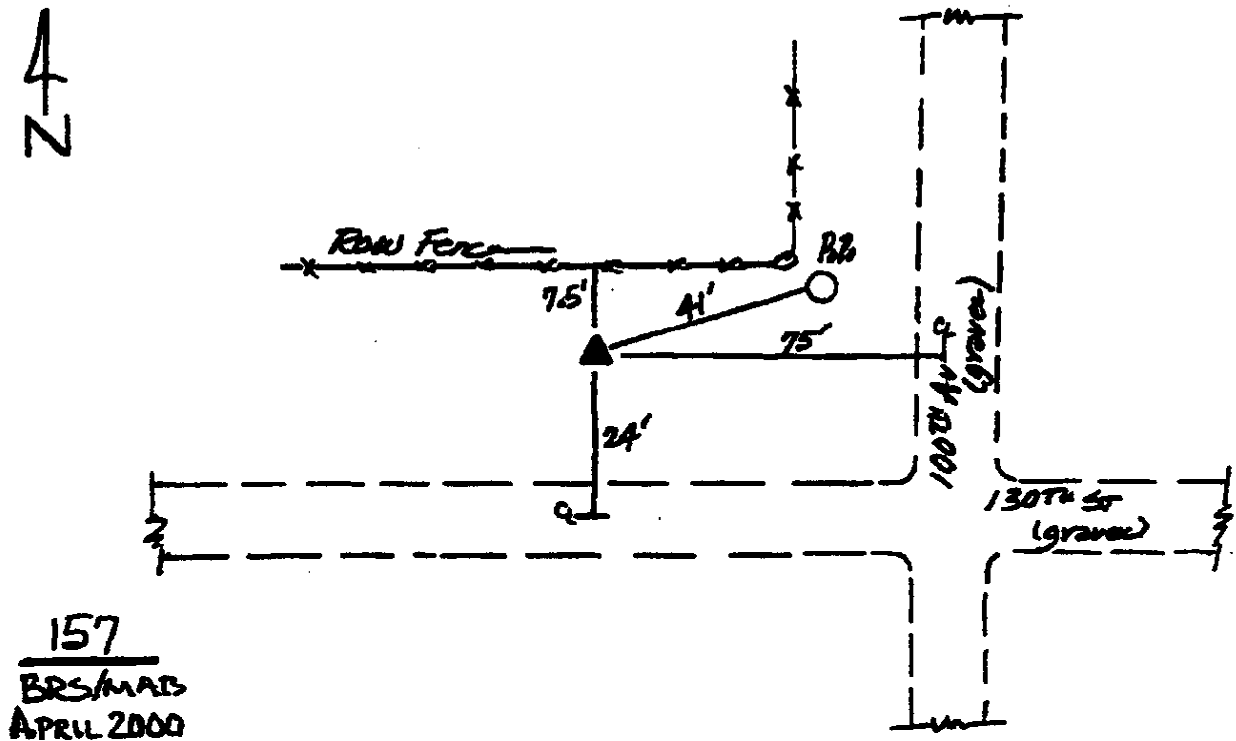
Designation: Van Buren Co. GPS Control Pt. 2000-157 (Set by ASI in 2000)

NAD 83(NA2011) Latitude: **N40°46'11.32600"** Longitude: **W91°43'07.99199"**
NAVD 88 Ortho Height: **740.920sft** Ellip. Ht: **632.224sft** **Geoid12A**

Iowa South Zone (1402) Northing: **285517.434sft** Easting: **2133724.043sft**
Mapping Angle: **1°10'24"** Combination Scale Factor: **0.9999463324**

IaRCS Zone 14 Northing: **6389727.781sft** Easting: **24370119.775sft**
Mapping Angle: **-0°18'22"** Combination Scale Factor: **1.0000071111**

Monument Type: 5/8" dia. driven aluminum rod with a 2-1/2" dia. aluminum cap and permanent magnet encased in a 5" dia. PVC pipe with an aluminum access cover.



This document was prepared by DCI on December 17, 2014 for use by Lee County, Iowa