

Lee County, Iowa

Horizontal Datum: **NAD 83(2011)** - Vertical Datum: **NAVD 1988**
Iowa State Plane South Zone (1402)
Iowa Regional Coordinate System Zone 14 Burlington
US Survey Feet
2014

Point Name: **221**

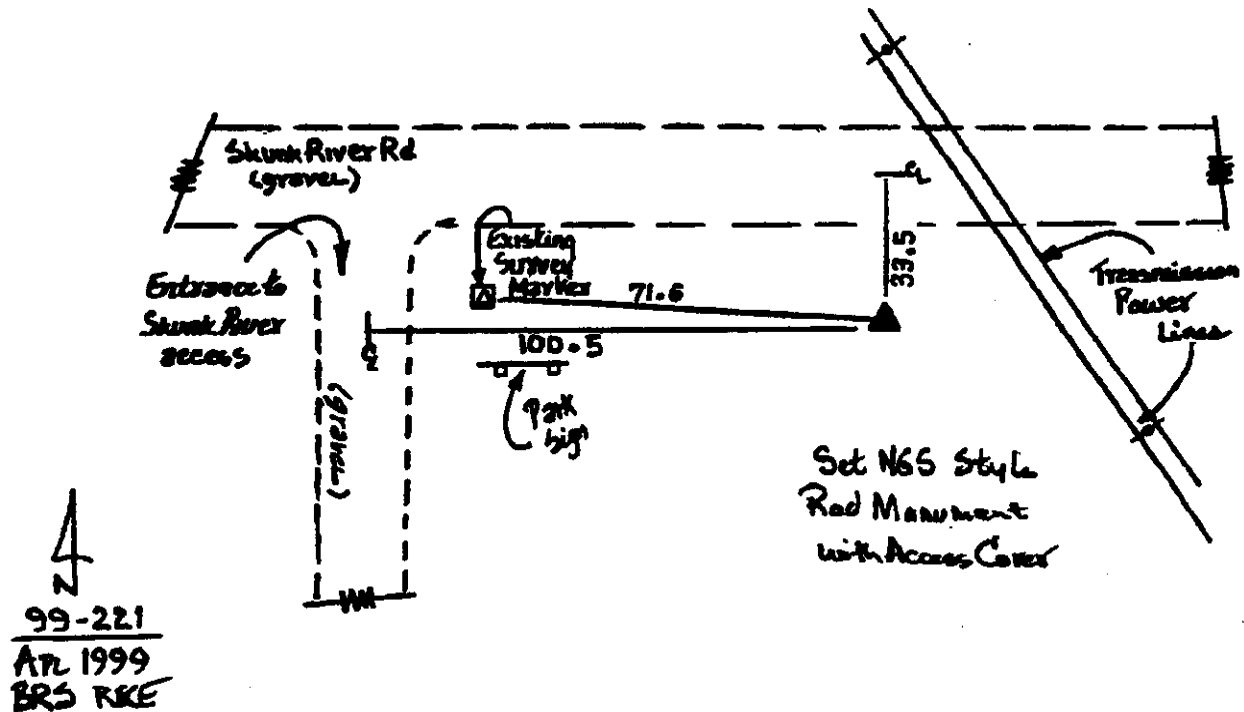
Designation: Des Moines Co. GPS Control Pt. 99-221 (Set by ASI in 1999)

NAD 83(NA2011) Latitude: **N40°45'18.36189"** Longitude: **W91°15'26.78575"**
NAVD 88 Ortho Height: **552.960sft** Ellip. Ht: **443.870sft** **Geoid12A**

Iowa South Zone (1402) Northing: **283115.104sft** Easting: **2261641.598sft**
Mapping Angle: **1°28'38"** Combination Scale Factor: **0.9999572708**

IaRCS Zone 14 Northing: **6384020.544sft** Easting: **24497938.557sft**
Mapping Angle: **-0°00'17"** Combination Scale Factor: **0.9999968234**

Monument Type: 5/8" dia. driven aluminum rod with a 2-1/2" dia. aluminum cap and permanent magnet encased in a 5" dia. PVC pipe with an aluminum access cover.



This document was prepared by DCI on December 17, 2014 for use by Lee County, Iowa