

Lee County, Iowa

Horizontal Datum: **NAD 83(2011)** - Vertical Datum: **NAVD 1988**
Iowa State Plane South Zone (1402)
Iowa Regional Coordinate System Zone 14 Burlington
US Survey Feet
2014

Point Name: **232**

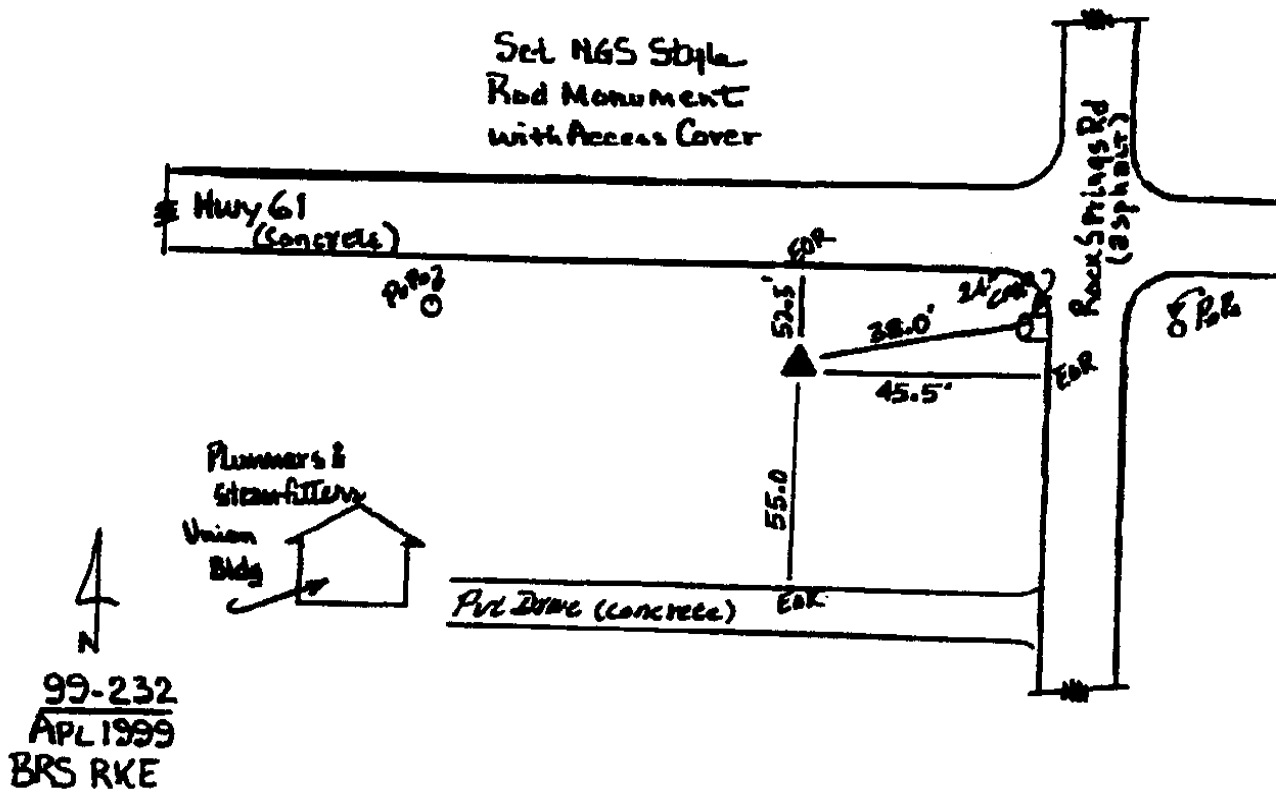
Designation: Des Moines Co. GPS Control Pt. 99-232 (Set by ASI in 1999)

NAD 83(NA2011) Latitude: **N40°43'38.75142"** Longitude: **W91°12'02.23913"**
NAVD 88 Ortho Height: **557.060sft** Ellip. Ht: **447.892sft** Geoid12A

Iowa South Zone (1402) Northing: **273448.818sft** Easting: **2277644.065sft**
Mapping Angle: **1°30'53"** Combination Scale Factor: **0.9999609242**

IaRCS Zone 14 Northing: **6373943.184sft** Easting: **24513686.230sft**
Mapping Angle: **0°01'56"** Combination Scale Factor: **0.9999968406**

Monument Type: 5/8" dia. driven aluminum rod with a 2-1/2" dia. aluminum cap and permanent magnet encased in a 5" dia. PVC pipe with an aluminum access cover.



This document was prepared by DCI on December 17, 2014 for use by Lee County, Iowa